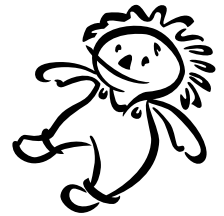


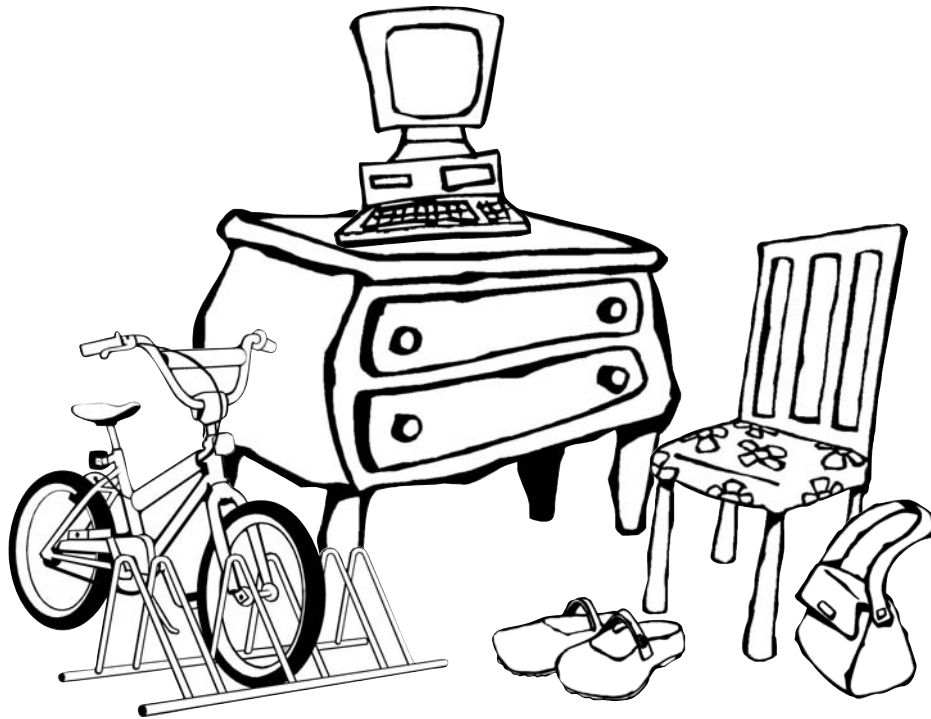


MIDDLESEX COUNTY IMPROVEMENT AUTHORITY

REUSE IT AGAIN!

MIDDLESEX COUNTY'S DONATION RECYCLING DIRECTORY





ACKNOWLEDGMENTS

Many thanks to Richard Hills and our colleagues at the Middlesex County Division of Solid Waste Management for their assistance in providing information. Thanks also to the participating organizations listed in this booklet and to you, the residents of Middlesex County, for all your recycling efforts.

PLEASE NOTE

If your organization would like to be listed in the next edition, please complete the questionnaire at the back of this booklet and return it to the Middlesex County Improvement Authority.

REUSE IT AGAIN! is published by

Division of Recycling
Middlesex County Improvement Authority
55 Edgeboro Road
East Brunswick, NJ 08816
Edward J. Windas, Recycling Manager
1-800-488-MCIA
mciarecy@superlink.net

Editorial Staff

Jane S. Leal
Jennifer Apostol
Abigail Kesely



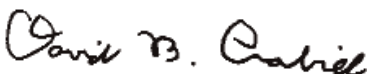
Dear Middlesex County Resident:

Middlesex County has exceeded the recycling goals set by the State of New Jersey for seven years in a row. This has been accomplished because Middlesex County residents are dedicated recyclers. In the spirit of maintaining our incredible recycling track record, we are proud to present the third edition of our reuse it manual, **REUSE IT AGAIN!** With the aid of this booklet, you can donate your unwanted goods to organizations within Middlesex County for reuse. In this way, you are keeping these items out of the County's landfill. You are also extending the life of the landfill and saving your municipality money by not having to pay tipping fees.

Over these last years, thousands of our reuse it booklets have been distributed to Middlesex County residents. In this third edition, you'll find more listings of organizations and more categories of items to be recycled. There is an alphabetical listing of participating organizations and an alphabetical listing of the commodities accepted by each organization.

We have thoroughly checked all information and know that the information contained here is accurate as of press time. But circumstances do change, so we recommend getting in touch with an organization to confirm their listings.

We hope you find this booklet helpful and we encourage you to **REUSE IT AGAIN!**



David B. Crabel
Freeholder Director and MCIA Liaison



Leonard J. Roseman
MCIA Chairman



SECTION ONE

ORGANIZATIONS...

A Bright Beginning Childcare Center	12
Above & Beyond Daycare & Kindergarten	12
Action Pregnancy Center	12
Agapeland Childcare & Camp	12
Anshe Emeth Community Development Corp.	13
Association for Retarded Citizens, Middlesex County	13
Basic Needs Program	13
Blumig Kennel	13
Book Swap Center	14
Boy Scouts of America	14
Brighton Gardens – Edison	14
Carteret Free Public Library	14
Catholic Charities – Ozanam Family Shelter	15
Catholic Charities – Ozanam Men’s Shelter	15
Catholic Charities – Youth Enrichment Services	15
Chai Project	15
Christ United Methodist Church	16
Community Renewal of South Brunswick	16
Cranbury Book Worm	16
Crossroads Country Day Care	16
Damon House, Inc.	17
Developmental Learning Center	17
Easter Seals NJ – Sayreville ATS	17
Ebenezer Baptist Church	17
Edison Animal Control Services	18
Emmaus Retreat House	18
Family & Children’s Services of Central NJ	18
The First Class Childcare Center	19
FISH, Inc.	19
Forum Theatre Company	19
George Street Playhouse	19
The Goddard School.....	20
The Goddard School of Old Bridge/Matawan.....	20
Goodwill – Industries of Greater NY & Northern NJ Inc.	20
Greater Brunswick Charter School	20
Heavenly Angels	21
Hire Attire.....	21
Hubcap Tire & Wheel of NJ.....	21
Jamesburg Public Library	21
Jewish Family & Vocational Service of Middlesex County	22
Jewish Historical Society of Central Jersey.....	22
The John E. Toolan Kiddie Keep Well Camp	22
Joy in the City Childcare Center.....	22
Kiddie Academy of North Brunswick	23
KinderCare Learning Center – East Brunswick	23
Latinos United for Prevention & Education (LUPE).....	23
Learning in Playgroup and a Little Class Preschool.....	24
Lenscrafters	24-25
Life Choices Resource Center.....	25
Lion of Judah Faith Center, Inc.	25
Literacy Volunteers of Middlesex County	25
Manavi	26
March of Dimes (Central Jersey).....	26
Mario Gonzalez Child Development Center	26
Metuchen-Edison YMCA	26

Metuchen Public Library.....	27
Middlesex Boro Public Library.....	27
Middlesex County Office for the Disabled	27
Middlesex County Plays-in-the-Park	27
Middlesex Interfaith Partners with the Homeless (MIPH)	28
Mi Escuelita Day Care Center	28
My Sister’s Closet Consignment Shop.....	28
Naomi’s Way Transitional Housing for Women & Children	28
New Brunswick Public Schools Adult Learning Center.....	29
New Brunswick Senior Citizen Center	29
New Eyes for the Needy, Inc.	29
PARTS Program/New Jersey Association on Correction.....	29
Pine Grove Cooperative Nursery School	30
Plainsboro Public Library	30
Poile Tzedek	30
The Pride Center of New Jersey, Inc.....	30
Puerto Rican Action Board Preschool	31
Puerto Rican Association for Human Development, Inc.	31
Rainbow Academy Pre-School	31
Raritan Bay Mental Health Center Sales by the Bay Thrift Store.....	32
Raritan Valley YMCA	32
Roosevelt Care Center.....	32
Rose Mountain Care Center	33
Rutgers Theatre Arts Department	33
Second Ward Block Club & Crime Watch	33
Self-Help Center of New Brunswick	33
Spotswood Public Library	34
St. Peter’s Episcopal Church Thrift Store	34
St. Peter’s University Hospital	34
St. Vincent DePaul.....	34
Temple Emanu-El	35
Vietnam Veterans of America	35
We Cash Clothes “For a Cause” Inc.	35
Woodrow Wilson School	35

ITEMS...

Appliances

Above & Beyond Daycare & Kindergarten	12
Anshe Emeth Community Development Corp.	13
Association for Retarded Citizens, Middlesex County	13
Basic Needs Program	13
Boy Scouts of America	14
Catholic Charities-Youth Enrichment Services.....	15
Chai Project	15
Developmental Learning Center	17
Emmaus Retreat House	18
Family & Children’s Services of Central NJ	18
Greater Brunswick Charter School	20
The John E. Toolan Kiddie Keep Well Camp	22
Joy in the City Childcare Center.....	22
Kiddie Academy of North Brunswick	23
Lion of Judah Faith Center, Inc.	25
Middlesex Interfaith Partners with the Homeless (MIPH)	28
Naomi’s Way Transitional Housing for Women & Children	28
PARTS Program/New Jersey Association on Correction.....	29
Poile Tzedek	30
Puerto Rican Action Board Preschool	31
Puerto Rican Association for Human Development, Inc.	31



Raritan Bay Mental Health Center Sales by the Bay Thrift Store	32
Raritan Valley YMCA	32
Second Ward Block Club & Crime Watch	33
Self-Help Center of New Brunswick	33
St. Vincent DePaul	34
Vietnam Veterans of America	35

Arts & Crafts

A Bright Beginning Childcare Center	12
Above & Beyond Daycare & Kindergarten	12
Agapeland Childcare & Camp	12
Association for Retarded Citizens, Middlesex County	13
Boy Scouts of America	14
Catholic Charities-Youth Enrichment Services	15
Community Renewal of South Brunswick	16
Crossroads Country Day Care	16
Damon House, Inc.	17
Developmental Learning Center	17
Easter Seals NJ-Sayreville ATS	17
Family & Children's Services of Central NJ	18
The First Class Childcare Center	19
George Street Playhouse	19
The Goddard School	20
The Goddard School of Old Bridge/Matawan	20
Goodwill – Industries of Greater NY & Northern NJ Inc.	20
Greater Brunswick Charter School	20
Heavenly Angels	21
Jewish Family & Vocational Service of Middlesex County	22
Jewish Historical Society of Central Jersey	22
The John E. Toolan Kiddie Keep Well Camp	22
Joy in the City Childcare Center	22
Kiddie Academy of North Brunswick	23
KinderCare Learning Center – East Brunswick	23
Learning in Playgroup and a Little Class Preschool	24
Literacy Volunteers of Middlesex County	25
Metuchen-Edison YMCA	26
Middlesex County Plays-in-the-Park	27
Middlesex Interfaith Partners with the Homeless	28
Mi Escuelita Day Care Center	28
New Brunswick Senior Citizen Center	29
PARTS Program/New Jersey Association on Correction	29
Pine Grove Cooperative Nursery School	30
Poile Tzedek	30
Puerto Rican Action Board Preschool	31
Puerto Rican Association for Human Development, Inc.	31
Rainbow Academy Pre-School	31
Raritan Bay Mental Health Center Sales by the Bay Thrift Store	32
Raritan Valley YMCA	32
Roosevelt Care Center	32
Rose Mountain Care Center	33
Self-Help Center of New Brunswick	33
Spotswood Public Library	34
St. Peter's University Hospital	34
Vietnam Veterans of America	35

Automobiles

FISH, Inc.	19
------------	----

Forum Theatre Company	19
George Street Playhouse	19
Jewish Family & Vocational Service of Middlesex County	22
Lion of Judah Faith Center, Inc.	25
Poile Tzedek	30

Baby Items

Action Pregnancy Center	12
Basic Needs Program	13
Developmental Learning Center	17
Emmaus Retreat House	18
Family & Children's Services of Central NJ	18
The First Class Childcare Center	19
The Goddard School of Old Bridge/Matawan	20
Kiddie Academy of North Brunswick	23
Life Choices Resource Center	25
Lion of Judah Faith Center, Inc.	25
Middlesex Interfaith Partners with the Homeless (MIPH)	28
Naomi's Way Transitional Housing for Women & Children	28
PARTS Program/New Jersey Association on Correction	29
Pine Grove Cooperative Nursery School	30
Poile Tzedek	30
Puerto Rican Action Board Preschool	31
St. Vincent DePaul	34
Vietnam Veterans of America	35

Bicycles



A Bright Beginning Childcare Center	12
Catholic Charities – Ozanam Men's Shelter	15
Developmental Learning Center	17
The First Class Childcare Center	19
FISH, Inc.	19
Goodwill – Industries of Greater NY & Northern NJ Inc.	20
Kiddie Academy of North Brunswick	23
Learning in Playgroup and a Little Class Preschool	24
Lion of Judah Faith Center, Inc.	25
Middlesex Interfaith Partners with the Homeless (MIPH)	28
Mi Escuelita Day Care Center	28
PARTS Program/New Jersey Association on Correction	29
Pine Grove Cooperative Nursery School	30
Poile Tzedek	30
Raritan Bay Mental Health Center Sales by the Bay Thrift Store	32
Raritan Valley YMCA	32
Vietnam Veterans of America	35
We Cash Clothes "For A Cause" Inc.	35

Books



A Bright Beginning Childcare Center	12
Above & Beyond Daycare & Kindergarten	12
Anshe Emeth Community Development Corp.	13
Association for Retarded Citizens, Middlesex County	13
Book Swap Center	14
Brighton Gardens – Edison	14
Carteret Free Public Library	14
Catholic Charities – Ozanam Men's Shelter	15
Catholic Charities – Youth Enrichment Services	15



Chai Project	15
Cranbury Book Worm	16
Damon House, Inc.	17
Developmental Learning Center	17
Emmaus Retreat House	18
Family & Children’s Services of Central NJ	18
The First Class Childcare Center	19
The Goddard School.....	20
The Goddard School of Old Bridge/Matawan.....	20
Goodwill – Industries of Greater NY & Northern NJ Inc.	20
Greater Brunswick Charter School	20
Jamesburg Public Library	21
Jewish Historical Society of Central Jersey	22
The John E. Toolan Kiddie Keep Well Camp	22
Joy in the City Childcare Center.....	22
Kiddie Academy of North Brunswick	23
KinderCare Learning Center – East Brunswick	23
Learning in Playgroup and a Little Class Preschool.....	24
Literacy Volunteers of Middlesex County	25
Mario Gonzalez Child Development Center	26
Metuchen-Edison YMCA	26
Metuchen Public Library.....	27
Middlesex Boro Public Library.....	27
Middlesex County Plays-in-the-Park	27
Mi Escuelita Day Care Center	28
PARTS Program/New Jersey Association on Correction.....	29
Pine Grove Cooperative Nursery School	30
Plainsboro Public Library	30
Poile Tzedek	30
The Pride Center of New Jersey, Inc.....	30
Puerto Rican Action Board Preschool	31
Puerto Rican Association for Human Development, Inc.	31
Rainbow Academy Pre-School	31
Raritan Bay Mental Health Center Sales by the Bay Thrift Store	32
Raritan Valley YMCA	32
Roosevelt Care Center.....	32
Self-Help Center of New Brunswick	33
Spotswood Public Library	34
St. Peter’s University Hospital	34
St. Vincent DePaul.....	34
Vietnam Veterans of America	35
Woodrow Wilson School	35



Building Materials/Tools

Boy Scouts of America.....	14
Damon House, Inc.....	17
Forum Theatre Company.....	19
George Street Playhouse	19
The John E. Toolan Kiddie Keep Well Camp	22
Joy in the City Childcare Center.....	22
Learning in Playgroup and a Little Class Preschool.....	24
Lion of Judah Faith Center, Inc.	25
Middlesex County Plays-in-the-Park	27
Puerto Rican Association for Human Development, Inc.	31
Raritan Bay Mental Health Center Sales by the Bay Thrift Store	32
Raritan Valley YMCA	32

Clothing (to be Recycled)

Goodwill – Industries of Greater NY & Northern NJ Inc.	20
Raritan Bay Mental Health Center Sales by the Bay Thrift Store	32
Vietnam Veterans of America	35

Clothing (to be Reused)

Catholic Charities-Ozanam Men’s Shelter.....	15
Chai Project	15
Damon House, Inc.....	17
Developmental Learning Center	17
Emmaus Retreat House	18
Family & Children’s Services of Central NJ	18
The First Class Childcare Center	19
FISH, Inc.	19
George Street Playhouse	19
Goodwill – Industries of Greater NY & Northern NJ Inc.	20
Heavenly Angels	21
Hire Attire.....	21
Kiddie Academy of North Brunswick	23
KinderCare Learning Center – East Brunswick	23
Latinos United for Prevention & Education (LUPE).....	23
Life Choices Resource Center.....	25
Lion of Judah Faith Center, Inc.	25
Manavi	26
March of Dimes (Central Jersey).....	26
Mario Gonzalez Child Development Center	26
Middlesex County Plays-in-the-Park	27
Middlesex Interfaith Partners with the Homeless (MIPH)	28
My Sister’s Closet Consignment Shop.....	28
Naomi’s Way Transitional Housing for Women & Children.....	28
New Brunswick Public Schools Adult Learning Center.....	29
PARTS Program/New Jersey Association on Correction.....	29
Poile Tzedek	30
Puerto Rican Association for Human Development, Inc.	31
Raritan Bay Mental Health Center Sales by the Bay Thrift Store	32
Rutgers Theatre Arts Department	33
Second Ward Block Club & Crime Watch	33
Self-Help Center of New Brunswick	33
St. Peter’s Episcopal Church Thrift Store	34
St. Vincent DePaul.....	34
Vietnam Veterans of America	35
We Cash Clothes “For A Cause” Inc.	35



Computers

A Bright Beginning Childcare Center	12
Above & Beyond Daycare & Kindergarten.....	12
Association for Retarded Citizens, Middlesex County	13
Community Renewal of South Brunswick.....	16
Crossroads Country Day Care	16
Developmental Learning Center	17
Emmaus Retreat House	18
Family & Children’s Services of Central NJ	18
The First Class Childcare Center	19
The Goddard School of Old Bridge/Matawan.....	20
Goodwill – Industries of Greater NY & Northern NJ Inc.	20
Greater Brunswick Charter School	20
Jewish Family & Vocational Service of Middlesex County	22



Jewish Historical Society of Central Jersey	22
Joy in the City Childcare Center	22
Kiddie Academy of North Brunswick	23
KinderCare Learning Center – East Brunswick	23
Learning in Playgroup and a Little Class Preschool	24
Lion of Judah Faith Center, Inc.	25
Literacy Volunteers of Middlesex County	25
March of Dimes (Central Jersey)	26
Mario Gonzalez Child Development Center	26
Middlesex County Office for the Disabled	27
Middlesex County Plays-in-the-Park	27
Middlesex Interfaith Partners with the Homeless (MIPH)	28
Mi Escuelita Day Care Center	28
New Brunswick Senior Citizen Center	29
PARTS Program/New Jersey Association on Correction	29
Poile Tzedek	30
The Pride Center of New Jersey, Inc.	30
Puerto Rican Association for Human Development, Inc.	31
Rainbow Academy Pre-School	31
Raritan Bay Mental Health Center Sales by the Bay Thrift Store	32
Raritan Valley YMCA	32
Rose Mountain Care Center	33
Self-Help Center of New Brunswick	33
Spotswood Public Library	34
St. Vincent DePaul	34
Temple Emanu-El	35



Computer Supplies

A Bright Beginning Childcare Center	12
Association for Retarded Citizens, Middlesex County	13
Community Renewal of South Brunswick	16
Crossroads Country Day Care	16
Developmental Learning Center	17
Family & Children’s Services of Central NJ	18
The First Class Childcare Center	19
The Goddard School of Old Bridge/Matawan	20
Goodwill – Industries of Greater NY & Northern NJ Inc.	20
Jewish Family & Vocational Service of Middlesex County	22
Jewish Historical Society of Central Jersey	22
The John E. Toolan Kiddie Keep Well Camp	22
Joy in the City Childcare Center	22
Kiddie Academy of North Brunswick	23
KinderCare Learning Center – East Brunswick	23
Learning in Playgroup and a Little Class Preschool	24
Lion of Judah Faith Center, Inc.	25
Literacy Volunteers of Middlesex County	25
March of Dimes (Central Jersey)	26
Metuchen-Edison YMCA	26
Middlesex County Plays-in-the-Park	27
Mi Escuelita Day Care Center	28
New Brunswick Senior Citizen Center	29
PARTS Program/New Jersey Association on Correction	29
Poile Tzedek	30
The Pride Center of New Jersey, Inc.	30
Puerto Rican Association for Human Development, Inc.	31
Raritan Bay Mental Health Center Sales by the Bay Thrift Store	32
Raritan Valley YMCA	32
Self-Help Center of New Brunswick	33
Spotswood Public Library	34

Temple Emanu-El	35
Vietnam Veterans of America	35

Cookware (Pots, Pans)



Basic Needs Program	13
Boy Scouts of America	14
Catholic Charities-Youth Enrichment Services	15
Chai Project	15
Damon House, Inc.	17
Emmaus Retreat House	18
The First Class Childcare Center	19
Goodwill – Industries of Greater NY & Northern NJ Inc.	20
The John E. Toolan Kiddie Keep Well Camp	22
Kiddie Academy of North Brunswick	23
Lion of Judah Faith Center, Inc.	25
Metuchen-Edison YMCA	26
Middlesex Interfaith Partners with the Homeless (MIPH)	28
Naomi’s Way Transitional Housing for Women & Children	28
PARTS Program/New Jersey Association on Correction	29
Poile Tzedek	30
Puerto Rican Action Board Preschool	31
Puerto Rican Association for Human Development, Inc.	31
Raritan Bay Mental Health Center Sales by the Bay Thrift Store	32
Roosevelt Care Center	32
Second Ward Block Club & Crime Watch	33
Self-Help Center of New Brunswick	33
St. Vincent DePaul	34
Vietnam Veterans of America	35

Diningware (Dishes, Utensils)

Basic Needs Program	13
Boy Scouts of America	14
Catholic Charities-Youth Enrichment Services	15
Chai Project	15
Damon House, Inc.	17
Developmental Learning Center	17
Emmaus Retreat House	18
Goodwill – Industries of Greater NY & Northern NJ Inc.	20
The John E. Toolan Kiddie Keep Well Camp	22
Kiddie Academy of North Brunswick	23
Lion of Judah Faith Center, Inc.	25
Middlesex Interfaith Partners with the Homeless (MIPH)	28
My Sister’s Closet Consignment Shop	28
Naomi’s Way Transitional Housing for Women & Children	28
PARTS Program/New Jersey Association on Correction	29
Poile Tzedek	30
Puerto Rican Action Board Preschool	31
Puerto Rican Association for Human Development, Inc.	31
Raritan Bay Mental Health Center Sales by the Bay Thrift Store	32
Second Ward Block Club & Crime Watch	33
Self-Help Center of New Brunswick	33
Vietnam Veterans of America	35



Electronics

Anshe Emeth Community Development Corp.	13
Chai Project	15



Christ United Methodist Church	16
Emmaus Retreat House	18
Forum Theatre Company	19
George Street Playhouse	19
Joy in the City Childcare Center.....	22
March of Dimes (Central Jersey).....	26
Mario Gonzalez Child Development Center	26
Middlesex County Office for the Disabled	27
Naomi's Way Transitional Housing for Women & Children.....	28
Poile Tzedek	30
Roosevelt Care Center.....	32
Second Ward Block Club & Crime Watch	33
St. Vincent DePaul.....	34

Eyeglasses

Catholic Charities-Youth Enrichment Services.....	15
FISH, Inc.	19
Goodwill – Industries of Greater NY & Northern NJ Inc.	20
Lenscrafters – East Brunswick	24
Lenscrafters – Edison	24
Lenscrafters – Woodbridge.....	25
New Eyes for the Needy, Inc.	29
Puerto Rican Association for Human Development, Inc.	31
Rutgers Theatre Arts Department	33
Temple Emanu-El	35

Furniture (Household)

Association for Retarded Citizens, Middlesex County	13
Basic Needs Program	13
Chai Project	15
Emmaus Retreat House	18
Family & Children's Services of Central NJ	18
George Street Playhouse	19
The John E. Toolan Kiddie Keep Well Camp	22
Latinos United for Prevention & Education (LUPE).....	23
Learning in Playgroup and a Little Class Preschool.....	24
Life Choices Resource Center.....	25
Lion of Judah Faith Center, Inc.	25
PARTS Program/New Jersey Association on Correction.....	29
Poile Tzedek	30
Puerto Rican Association for Human Development, Inc.	31
Raritan Bay Mental Health Center Sales by the Bay Thrift Store.....	32
Roosevelt Care Center.....	32
Second Ward Block Club & Crime Watch	33

Furniture (Office)

Anshe Emeth Community Development Corp.	13
Association for Retarded Citizens, Middlesex County	13
Developmental Learning Center	17
George Street Playhouse	19
Greater Brunswick Charter School	20
Jewish Historical Society of Central Jersey.....	22
The John E. Toolan Kiddie Keep Well Camp	22
Kiddie Academy of North Brunswick	23
Lion of Judah Faith Center, Inc.	25

Literacy Volunteers of Middlesex County	25
March of Dimes (Central Jersey).....	26
Metuchen-Edison YMCA	26
Mi Escuelita Day Care Center	28
New Brunswick Senior Citizen Center	29
PARTS Program/New Jersey Association on Correction.....	29
Puerto Rican Association for Human Development, Inc.	31
Raritan Valley YMCA	32
Second Ward Block Club & Crime Watch	33

Gardening Tools

Boy Scouts of America.....	14
Community Renewal of South Brunswick	16
The First Class Childcare Center	19
Greater Brunswick Charter School	20
Jewish Historical Society of Central Jersey.....	22
The John E. Toolan Kiddie Keep Well Camp	22
KinderCare Learning Center – East Brunswick	23
Learning in Playgroup and a Little Class Preschool.....	24
New Brunswick Senior Citizen Center	29
Pine Grove Cooperative Nursery School	30
Raritan Bay Mental Health Center Sales by the Bay Thrift Store.....	32
Raritan Valley YMCA	32
Roosevelt Care Center.....	32
Second Ward Block Club & Crime Watch	33
Vietnam Veterans of America	35

Greeting Cards

A Bright Beginning Childcare Center	12
Association for Retarded Citizens, Middlesex County	13
Catholic Charities-Youth Enrichment Services.....	15
Crossroads Country Day Care	16
Developmental Learning Center	17
The First Class Childcare Center	19
Goodwill – Industries of Greater NY & Northern NJ Inc.	20
Kiddie Academy of North Brunswick	23
KinderCare Learning Center – East Brunswick	23
Learning in Playgroup and a Little Class Preschool.....	24
Lion of Judah Faith Center, Inc.	25
Metuchen-Edison YMCA	26
New Brunswick Senior Citizen Center	29
Puerto Rican Action Board Preschool	31
Raritan Bay Mental Health Center Sales by the Bay Thrift Store.....	32
Self-Help Center of New Brunswick	33

Magazines

A Bright Beginning Childcare Center	12
Association for Retarded Citizens, Middlesex County	13
Carteret Free Public Library	14
Catholic Charities-Youth Enrichment Services.....	15
Cranbury Book Worm	16
Easter Seals NJ-Sayreville ATS	17
The First Class Childcare Center	19
Jewish Historical Society of Central Jersey.....	22
Kiddie Academy of North Brunswick	23
Learning in Playgroup and a Little Class Preschool.....	24



Mi Escuelita Day Care Center	28
Naomi's Way Transitional Housing for Women & Children	28
Puerto Rican Action Board Preschool	31
Roosevelt Care Center.....	32
Rose Mountain Care Center	33
Self-Help Center of New Brunswick	33
Spotswood Public Library	34

Media (Educational)

(Videocassettes, DVDs, CDs, Cassette Tapes)

A Bright Beginning Childcare Center	12
Brighton Gardens – Edison	14
Carteret Free Public Library	14
Catholic Charities – Youth Enrichment Services	15
Crossroads Country Day Care	16
Damon House, Inc.....	17
Developmental Learning Center.....	17
Easter Seals NJ – Sayreville ATS	17
The First Class Childcare Center	19
The Goddard School.....	20
Goodwill – Industries of Greater NY & Northern NJ Inc.	20
Jewish Historical Society of Central Jersey.....	22
The John E. Toolan Kiddie Keep Well Camp	22
Joy in the City Childcare Center.....	22
Kiddie Academy of North Brunswick	23
KinderCare Learning Center – East Brunswick	23
Learning in Playgroup and a Little Class Preschool.....	24
Lion of Judah Faith Center, Inc.	25
Literacy Volunteers of Middlesex County	25
Metuchen-Edison YMCA	26
Metuchen Public Library.....	27
Middlesex County Plays-in-the-Park	27
Mi Escuelita Day Care Center	28
New Brunswick Senior Citizen Center	29
PARTS Program/New Jersey Association on Correction.....	29
Pine Grove Cooperative Nursery School	30
Poile Tzedek	30
The Pride Center of New Jersey, Inc.....	30
Puerto Rican Association for Human Development, Inc.	31
Raritan Bay Mental Health Center Sales by the Bay Thrift Store.....	32
Raritan Valley YMCA	32
Rose Mountain Care Center	33
Self-Help Center of New Brunswick	33
St. Vincent DePaul.....	34
Temple Emanu-El	35
Vietnam Veterans of America	35

Media (Used)



(Videocassettes, DVDs, CDs, Cassette Tapes)

A Bright Beginning Childcare Center	12
Brighton Gardens – Edison	14
Carteret Free Public Library	14
Catholic Charities – Ozanam Men's Shelter	15
Chai Project	15
Cranbury Book Worm	16
Easter Seals NJ – Sayreville ATS	17
Goodwill – Industries of Greater NY & Northern NJ Inc.	20

Learning in Playgroup and a Little Class Preschool.....	24
Mario Gonzalez Child Development Center	26
Metuchen-Edison YMCA	26
Metuchen Public Library.....	27
Middlesex County Plays-in-the-Park	27
Mi Escuelita Day Care Center	28
New Brunswick Senior Citizen Center	29
PARTS Program/New Jersey Association on Correction.....	29
Pine Grove Cooperative Nursery School	30
Poile Tzedek	30
The Pride Center of New Jersey, Inc.....	30
Puerto Rican Association for Human Development, Inc.	31
Raritan Bay Mental Health Center Sales by the Bay Thrift Store.....	32
Raritan Valley YMCA	32
Roosevelt Care Center.....	32
Rose Mountain Care Center	33
Self-Help Center of New Brunswick	33
Spotswood Public Library	34
St. Vincent DePaul.....	34
Vietnam Veterans of America	35

Medical Equipment

Anshe Emeth Community Development Corp.....	13
Middlesex County Office for the Disabled	27

Office Supplies

Anshe Emeth Community Development Corp.....	13
Boy Scouts of America.....	14
Catholic Charities-Ozanam Men's Shelter.....	15
Christ United Methodist Church	16
Community Renewal of South Brunswick	16
Crossroads Country Day Care	16
Damon House, Inc.....	17
Developmental Learning Center.....	17
Easter Seals NJ-Sayreville ATS	17
Emmaus Retreat House	18
The First Class Childcare Center	19
The Goddard School.....	20
Goodwill – Industries of Greater NY & Northern NJ Inc.	20
Greater Brunswick Charter School	20
Heavenly Angels	21
Jewish Family & Vocational Service of Middlesex County	22
Jewish Historical Society of Central Jersey.....	22
The John E. Toolan Kiddie Keep Well Camp	22
Joy in the City Childcare Center.....	22
Kiddie Academy of North Brunswick	23
KinderCare Learning Center – East Brunswick	23
Learning in Playgroup and a Little Class Preschool.....	24
Lion of Judah Faith Center, Inc.	25
Literacy Volunteers of Middlesex County	25
March of Dimes (Central Jersey).....	26
Metuchen-Edison YMCA	26
Middlesex County Plays-in-the-Park	27
New Brunswick Senior Citizen Center	29
PARTS Program/New Jersey Association on Correction.....	29
Pine Grove Cooperative Nursery School	30
Poile Tzedek	30



The Pride Center of New Jersey, Inc.....	30
Puerto Rican Action Board Preschool	31
Puerto Rican Association for Human Development, Inc.	31
Raritan Valley YMCA	32
Self-Help Center of New Brunswick	33
Spotswood Public Library	34
Vietnam Veterans of America	35

Pet Items



Blumig Kennel	13
Edison Animal Control Services	18

Playground Equipment

A Bright Beginning Childcare Center	12
Above & Beyond Daycare & Kindergarten	12
Crossroads Country Day Care	16
Developmental Learning Center	17
The First Class Childcare Center	19
The Goddard School of Old Bridge/Matawan.....	20
Goodwill – Industries of Greater NY & Northern NJ Inc.	20
The John E. Toolan Kiddie Keep Well Camp	22
Joy in the City Childcare Center.....	22
Kiddie Academy of North Brunswick	23
KinderCare Learning Center – East Brunswick	23
Learning in Playgroup and a Little Class Preschool.....	24
Metuchen-Edison YMCA	26
Mi Escuelita Day Care Center	28
Pine Grove Cooperative Nursery School	30
Puerto Rican Association for Human Development, Inc.	31
Raritan Valley YMCA	32
Vietnam Veterans of America	35

Printers (Computer)

A Bright Beginning Childcare Center	12
Above & Beyond Daycare & Kindergarten	12
Community Renewal of South Brunswick	16
Crossroads Country Day Care	16
Developmental Learning Center	17
Family & Children’s Services of Central NJ	18
The First Class Childcare Center	19
The Goddard School of Old Bridge/Matawan.....	20
Goodwill – Industries of Greater NY & Northern NJ Inc.	20
Greater Brunswick Charter School	20
Heavenly Angels	21
Jewish Family & Vocational Service of Middlesex County	22
Jewish Historical Society of Central Jersey	22
The John E. Toolan Kiddie Keep Well Camp	22
Kiddie Academy of North Brunswick	23
KinderCare Learning Center – East Brunswick	23
Lion of Judah Faith Center, Inc.	25
Middlesex County Plays-in-the-Park	27
Middlesex Interfaith Partners with the Homeless (MIPH)	28
Mi Escuelita Day Care Center	28
New Brunswick Senior Citizen Center	29
PARTS Program/New Jersey Association on Correction.....	29
Poile Tzedek	30

The Pride Center of New Jersey, Inc.....	30
Puerto Rican Association for Human Development, Inc.	31
Rainbow Academy Pre-School	31
Raritan Bay Mental Health Center Sales by the Bay Thrift Store.....	32
Raritan Valley YMCA	32
Rose Mountain Care Center	33
Self-Help Center of New Brunswick	33
Spotswood Public Library	34
Temple Emanu-El	35
Vietnam Veterans of America	35

Shoes



Catholic Charities-Ozanam Men’s Shelter.....	15
Ebenezer Baptist Church	17
Family & Children’s Services of Central NJ	18
FISH, Inc.	19
Goodwill – Industries of Greater NY & Northern NJ Inc.	20
Lion of Judah Faith Center, Inc.	25
Middlesex County Plays-in-the-Park	27
My Sister’s Closet Consignment Shop.....	28
PARTS Program/New Jersey Association on Correction.....	29
Raritan Bay Mental Health Center Sales by the Bay Thrift Store.....	32
Rutgers Theatre Arts Department	33
Second Ward Block Club & Crime Watch	33
St. Vincent DePaul.....	34
Vietnam Veterans of America	35
We Cash Clothes “For A Cause” Inc.	35

Sporting Goods



A Bright Beginning Childcare Center	12
Association for Retarded Citizens, Middlesex County	13
Boy Scouts of America.....	14
Damon House, Inc.....	17
Developmental Learning Center	17
Emmaus Retreat House	18
The First Class Childcare Center	19
FISH, Inc.	19
The Goddard School.....	20
The Goddard School of Old Bridge/Matawan.....	20
Goodwill – Industries of Greater NY & Northern NJ Inc.	20
The John E. Toolan Kiddie Keep Well Camp	22
Kiddie Academy of North Brunswick	23
Learning in Playgroup and a Little Class Preschool.....	24
Metuchen-Edison YMCA	26
Poile Tzedek	30
Puerto Rican Action Board Preschool	31
Puerto Rican Association for Human Development, Inc.	31
Raritan Bay Mental Health Center Sales by the Bay Thrift Store.....	32
Raritan Valley YMCA	32
Second Ward Block Club & Crime Watch	33
Vietnam Veterans of America	35

Toys



A Bright Beginning Childcare Center	12
Above & Beyond Daycare & Kindergarten	12
Basic Needs Program	13



Catholic Charities – Youth Enrichment Services	15
Chai Project	15
Crossroads Country Day Care	16
Developmental Learning Center	17
Ebenezer Baptist Church	17
Family & Children’s Services of Central NJ	18
The First Class Childcare Center	19
FISH, Inc.	19
The Goddard School of Old Bridge/Matawan.....	20
Goodwill – Industries of Greater NY & Northern NJ Inc.	20
The John E. Toolan Kiddie Keep Well Camp	22
Joy in the City Childcare Center.....	22
Kiddie Academy of North Brunswick	23
KinderCare Learning Center – East Brunswick	23
Latinos United for Prevention & Education (LUPE).....	23
Learning in Playgroup and a Little Class Preschool.....	24
Mario Gonzalez Child Development Center	26
Metuchen-Edison YMCA	26
Mi Escuelita Day Care Center	28
PARTS Program/New Jersey Association on Correction.....	29
Pine Grove Cooperative Nursery School	30
Poile Tzedek	30
Puerto Rican Action Board Preschool	31
Puerto Rican Association for Human Development, Inc.	31
Rainbow Academy Pre-School	31
Raritan Bay Mental Health Center Sales by the Bay Thrift Store.....	32
Raritan Valley YMCA	32
Second Ward Block Club & Crime Watch	33
St. Peter’s University Hospital	34
Vietnam Veterans of America	35

Jamesburg Public Library	21
Latinos United for Prevention & Education (LUPE).....	23
Learning in Playgroup and a Little Class Preschool.....	24
Lion of Judah Faith Center, Inc.	25
Manavi	26
Mario Gonzalez Child Development Center	26
Metuchen-Edison YMCA	26
Middlesex Interfaith Partners with the Homeless (MIPH)	28
My Sister’s Closet Consignment Shop.....	28
Naomi’s Way Transitional Housing for Women & Children.....	28
New Eyes for the Needy, Inc.	29
Poile Tzedek	30
The Pride Center of New Jersey, Inc.....	30
Roosevelt Care Center.....	32
Rutgers Theatre Arts Department	33
Second Ward Block Club & Crime Watch	33
Self-Help Center of New Brunswick	33
St. Peter’s Episcopal Church Thrift Store	34
St. Vincent DePaul.....	34
We Cash Clothes “For A Cause” Inc.	35

Typewriters

Anshe Emeth Community Development Corp.	13
Developmental Learning Center	17
Kiddie Academy of North Brunswick	23
Lion of Judah Faith Center, Inc.	25
Mi Escuelita Day Care Center	28
PARTS Program/New Jersey Association on Correction.....	29
Poile Tzedek	30
Puerto Rican Action Board Preschool	31
Puerto Rican Association for Human Development, Inc.	31
Vietnam Veterans of America	35

Other Items

Boy Scouts of America.....	14
Catholic Charities – Ozanam Family Shelter	15
Catholic Charities – Ozanam Men’s Shelter	15
Catholic Charities – Youth Enrichment Services	15
Chai Project	15
Christ United Methodist Church	16
Damon House, Inc.....	17
Ebenezer Baptist Church	17
Emmaus Retreat House	18
FISH, Inc.	19
Forum Theatre Company.....	19
George Street Playhouse	19
Hubcap Tire & Wheel of NJ.....	21

SECTION TWO



Special Recycling Programs

Clothes Hanger Recycling.....	39-40
Cell Phone Donation Program	41
Electronics Recycling Program	41
Home Generation of Medical Waste	41
Household Batteries Collection Program	42
Household Hazardous Waste (HHW) Collection	43
Propane Tank Disposal	43
Paint Recycling Drop-off Program	44
Tire Recycling Program	45
M.C.F.O.O.D.S.	46
Info Line of Middlesex County	46
Questionnaire	47-48



SECTION ONE

Directory of Organizations



A BRIGHT BEGINNING CHILDCARE CENTER

1440 How Lane, North Brunswick, NJ 08902

Phone: 732-448-0400

Contact: Sandra Sino

Business Hours: Monday-Friday 7:00 AM-6:30 PM

Drop-offs: Welcome Monday-Friday 7:00 AM-6:30 PM. Call the school to arrange for a possible pickup. All items must be in working condition.

Items Accepted: Arts & crafts materials, bicycles, books, computers, printers and computer supplies (CD-ROMs), greeting cards (used cards for craft projects), magazines, playground equipment, sporting goods, toys, and used and educational videocassettes. All items must be appropriate for children 6 years old and under. All donations are used by the preschool.

ABOVE & BEYOND DAYCARE & KINDERGARTEN

201 South 3rd Avenue, Highland Park, NJ 08904

Phone: 732-545-0277

Fax: 732-246-3100

Contact: Martha Rodriguez

Business Hours: Monday-Friday 7:30 AM-6:00 PM

Drop-offs: Welcome with a phone call in advance Monday-Friday 9:00 AM-4:00 PM. All items must be in good condition.

Items Accepted: Arts & crafts materials in boxes, hardcover children's books, computers, printer (IBM or MAC compatible) and children's software (IBM or MAC compatible), working appliances, playground equipment such as riding toys or slides, wooden blocks, and plastic toys. All donations are used at the school.

ACTION PREGNANCY CENTER

Crisis Prevention Center, 77 Paterson Street, New Brunswick, NJ 08901

Phone: 732-828-1166

Fax: 732-828-6650

Contact: Anne D'Angiolillo

Business Hours: Monday-Thursday 7:00 PM-9:30 PM; Saturday 9:30 AM-11:30 AM

Drop-offs: By appointment only, which can be arranged by calling in advance. Also call ahead to arrange a possible pickup. All items must be in good condition.

Items Accepted: Baby items from newborn up to 3-4 years old, cribs, and car seats. Donations are used by pregnant women in need.

AGAPELAND CHILDCARE & CAMP

2707 Main Street, Sayreville, NJ 08872

Phone: 732-727-9500 ext. 1119

Fax: 732-727-5796

Email: jhowell@ffmwoc.org

Contact: Jeff Howell

Business Hours: Monday-Friday 7:00 AM-6:00 PM

Drop-offs: Accepted Monday-Friday 9:00 AM-4:00 PM.

Items Accepted: Arts & crafts materials. All items accepted are used by the organization.



ANSHE EMETH COMMUNITY DEVELOPMENT CORP.

228 Livingston Avenue, New Brunswick, NJ 08901

Phone: 732-296-9922

Fax: 732-296-9933

Contact: Adriana Roffman

Business Hours: Monday-Friday 10:00 AM-3:00 PM

Drop-offs: Made during business hours. There is a form to be completed by the client stating what is being donated and its value. Please call to arrange a possible pickup.

Items Accepted: Medical equipment such as hospital beds, books (health literacy), braces, canes, commodes, crutches, nebulizers, shower seats, walkers, wheelchairs. For the administrative office: air conditioners, books, bookcases, colored paper, file cabinets, TVs, typewriters, vacuums, and VCRs. All donations are used by the group or loaned to elderly, disabled, and other low-income people.

ASSOCIATION FOR RETARDED CITIZENS, MIDDLESEX COUNTY

32 Ford Avenue, Suite 2, Milltown, NJ 08850

Phone: 732-247-8155

Fax: 732-247-5590

Contact: Lydia Mazzeo

Business Hours: Monday-Friday 9:00 AM-5:00 PM

Drop-offs: Please call for information regarding drop-off or pickup arrangements. All items must be in good condition.

Items Accepted: Appliances, arts & crafts materials, books, computers and computer supplies, office and household furniture, boxed or wrapped greeting cards and magazines, and sporting goods. All donations are used by one of the ARC facilities.

BASIC NEEDS PROGRAM

132 Second Street, Perth Amboy, NJ 08861

Phone: 732-324-1580

Fax: 732-324-8675

Contact: Beverly Williams

Business Hours: Monday-Friday 9:00 AM-4:00 PM

Drop-offs: To arrange a drop-off or a possible pickup, please call Beverly Williams, Janet Cruz, or Eva Martinez.

Items Accepted: Baby items, furniture (selected), housewares (small appliances, diningware, cookware – call for specific items), toys, etc. All donations are matched to a list of current people in need.

BLUMIG KENNEL

645 Old Stage Road, East Brunswick, NJ 08816

Phone: 732-251-3210

Fax: 732-251-1645

Email: blumigkenl@aol.com

Business Hours: Monday-Thursday 7:00 AM-10:00 AM; Friday 7:00 AM-4:00 PM; Sunday 8:30 AM-10:30 AM

Drop-offs: Please call in advance to schedule a drop-off.

Items Accepted: Blankets (washable), bleach, throw rugs, towels, and washcloths. All donations are used by the kennel.



BOOK SWAP CENTER

514 Georges Road, North Brunswick, NJ 08902

Phone: 732-828-0123

Contact: Helen Jolly

Business Hours: Tuesday-Saturday 10:00 AM-4:00 PM; Sunday 10:00 AM-2:00 PM

Drop-offs: Can be made during business hours.

Items Accepted: Hardcover and paperback books (for example, best sellers, children's books, and cookbooks). No textbooks.

BOY SCOUTS OF AMERICA

4315 U.S. Highway #1 South, Monmouth Junction, NJ 08852

Phone: 609-419-1600 ext. 22

Fax: 609-419-4186

Email: Jgliot@bsamail.org

Contact: John Gliot

Business Hours: Monday-Friday 9:00 AM-6:00 PM

Drop-offs: Please call in advance to arrange a drop-off or pickup.

Items Accepted: Arts & crafts supplies, boats (small), camping equipment (clean, less than 10 years old), cleaning supplies, kitchen items, life jackets, lumber (treated/untreated), office supplies, painting supplies, paper products, sports/recreational equipment, tires (new), tools, yard work supplies. All donations are used at Boy Scout camps.

BRIGHTON GARDENS – EDISON

1801 Oak Tree Road, Edison, NJ 08820

Phone: 732-767-1031

Fax: 732-767-0835

Contact: Annette Lissy – Activity Director

Business Hours: Tuesday-Saturday 8:30 AM-5:00 PM

Drop-offs: Accepted Sunday-Saturday 8:00 AM-8:00 PM. Call Annette to discuss the quantity of materials being dropped off.

Items Accepted: Books (large print-current best sellers), educational videocassettes (travelogs, etc.), and used videocassettes (movies, musicals, concerts, etc.). All items accepted are used by the seniors at Brighton Gardens.

CARTERET FREE PUBLIC LIBRARY

100 Cooke Avenue, Carteret, NJ 07008

Phone: 732-541-3830 ext. 0

Fax: 732-541-6948

Website: www.lmxac.org/carteret

Contact: Veronica Chan

Business Hours: Monday-Thursday 9:00 AM-8:00 PM; Friday and Saturday 9:00 AM-5:00 PM

Drop-offs: Accepted during business hours.

Items Accepted: Books: hardcover and paperback books (copyright less than 10 years old), magazines (recent). Possible acceptance of music and videos. No encyclopedias or textbooks. All donations are used in the library or sold for a low price at the ongoing book and magazine sale.



CATHOLIC CHARITIES-OZANAM FAMILY SHELTER

89 Truman Drive, Edison, NJ 08817

Phone: 732-985-0327

Website: www.ccdom.org

Contact: Connie Karli or Dennis Kucmyda

Business Hours: Monday-Friday 9:00 AM-5:00 PM

Drop-offs: Made only after consultation.

Items Accepted: Items vary according to need. When the call is placed, the staff will identify the items that are currently needed by the shelter.

CATHOLIC CHARITIES-OZANAM MEN'S SHELTER

20-22 Abeel Street, New Brunswick, NJ 08901

Phone: 732-729-0850

Fax: 732-729-0794

Website: www.ccdom.org

Contact: Wesley R. Moore

Business Hours: Open 24 hours a day, 7 days a week

Drop-offs: Made during their business hours at the above address.

Items Accepted: Bicycles, books, clothing (must be clean and in good condition), office supplies, shoes, used videocassettes, toiletries, T-shirts, towels and washcloths. All items are given directly to the clients of the shelter.

CATHOLIC CHARITIES-YOUTH ENRICHMENT SERVICES

115 Commercial Avenue, New Brunswick, NJ 08901

Phone: 732-249-3881

Fax: 732-249-3630

Website: www.ccdom.org

Contact: Antonik Small

Business Hours: Monday-Friday 7:30 AM-6:00 PM

Drop-offs: Accepted Monday-Friday, 10:00 AM-12:00 PM, at the Suydam Street entrance. Drop-offs must be arranged by a phone call in advance so the program can decide if they can use the donation.

Items Accepted: Appliances (microwaves, can openers, refrigerators), arts & crafts materials (paper, pens, pencils, markers, crayons), books, cookware, diningware, eyeglasses, greeting cards, magazines, toys appropriate for children ages 5-12, educational videocassettes, TVs and VCRs, and a watercooler. All items accepted are donated to families in need or are used for the children in the program.

CHAI PROJECT

5 Paterson Street, New Brunswick, NJ 08901

Phone: 732-247-7014 ext. 10

Fax: 732-247-2922

Contact: Jay Petillo

Business Hours: Monday-Friday 9:00 AM-5:00 PM

Drop-offs: Accepted during business hours. Please call in advance to schedule a possible pickup.

Items Accepted: Blankets, board games, books, cassette/CD players (portable), clothing (men's and women's), furniture, health care items, housewares, kitchen appliances (countertop), kitchen items, linens, luggage, microwaves, paper products, toys (holiday season), TVs, VCRs, videos, and word games. All donations are used by those in need within Middlesex County.



CHRIST UNITED METHODIST CHURCH

485 Hoes Lane, Piscataway, NJ 08854

Phone: 732-463-1517

Contact: Nancy (secretary)

Business Hours: Monday-Friday 8:00 AM-3:00 PM

Drop-offs: Please call the church to arrange a drop-off.

Items Accepted: Office supplies, used inkjet printer cartridges (no Epson – all other brands), and inactive cell phones (no accessories). All items accepted go toward the ministry of the church.

COMMUNITY RENEWAL OF SOUTH BRUNSWICK

503 Woodhaven Drive, Monmouth Junction, NJ 08852

Phone: 732-398-1452

Fax: 732-398-1452

Email: SOBrunsCR@Juno.com

Contact: Shirley Osipov

Business Hours: Monday-Friday 9:00 AM-5:00 PM

Drop-offs: Accepted Monday-Friday 9:00 AM-5:00 PM. Please call ahead to arrange for a drop-off. Pickups may also be arranged by calling in advance, depending upon the weight of the donation.

Items Accepted: Arts & crafts materials, computers, computer supplies, printers, gardening supplies, pots, and office supplies. All items are donated to needy families in South Brunswick and the surrounding areas.

CRANBURY BOOK WORM

54 North Main Street, Cranbury, NJ 08512

Phone: 609-655-1063

Business Hours: Monday-Friday 9:00 AM-8:00 PM; Saturday 9:00 AM-5:00 PM; Sunday 12:00 PM-5:00 PM

Drop-offs: Accepted Thursday 6:30 PM-7:30 PM; Friday 9:30 AM-12:00 PM, and alternate Sundays from 1:00 PM-4:00 PM. In order to make a drop-off, please call first so arrangements can be made. A selection of the donated books will be accepted.

Items Accepted: Books, cassettes/CDs, magazines (select). No book club edition books, children's paperbacks, encyclopedias, incomplete sets, National Geographics (after 1920), Reader's Digest Condensed Books, or textbooks.

CROSSROADS COUNTRY DAY CARE

114 Old Stage Road, East Brunswick, NJ 08816

Phone: 732-251-3221

Fax: 732-723-9026

Contact: Vivian Opesso

Business Hours: Monday-Friday 7:00 AM-6:00 PM

Drop-offs: Welcome Monday-Friday 9:00 AM-5:00 PM. Pickups may also be arranged by calling in advance.

Items Accepted: Arts & crafts materials, computers, printers and computer supplies, greeting cards, office supplies (copier paper, notepads), playground equipment (preferably made of durable plastic, e.g., Little Tikes), toys (for ages 2-6), and educational videocassettes. All items accepted are used for the school and children.



DAMON HOUSE, INC.

105-109 Joyce Kilmer Avenue, New Brunswick, NJ 08901

Phone: 732-828-3988

Fax: 732-828-2710

Contact: Marlene Verderosa

Business Hours: Monday-Friday 9:00 AM-5:00 PM

Drop-offs: Made Monday-Friday between 9:00 AM-3:00 PM. Arrangements must be made by calling in advance. Pickups may also be arranged for certain items by calling in advance.

Items Accepted: Arts & crafts materials, books (appropriate), building materials and tools, clothing (large sized casual men's clothing to be reused), cookware, diningware, office supplies, sporting goods, educational videocassettes, linens, and silverware.

DEVELOPMENTAL LEARNING CENTER

272 Rhode Hall Road, Monroe, NJ 08831

Phone: 732-521-4322

Contact: Francis or Christine

Business Hours: Monday-Friday 7:00 AM-6:00 PM

Drop-offs: Made Monday-Friday 9:00 AM-5:30 PM. Call to make an appointment for a possible pickup.

Items Accepted: Appliances, arts & crafts materials, bicycles, books, car seats (infant/child), clothing (to be reused – for dress-up play), computers, computer supplies, diningware, office furniture, greeting cards, office supplies, playground equipment, printers (computer), sporting goods, toys, typewriters, and educational videocassettes. All items accepted are used to benefit the children of the center.

EASTER SEALS NJ-SAYREVILLE ATS

1841-B Route 35 South, Sayreville, NJ 08879

Phone: 732-257 6662

Fax: 732-316-0973

Website: www.eastersealsnj.org

Contact: Marge Mendolia

Business Hours: Monday-Friday 8:30 AM-4:00 PM

Drop-offs: Can be scheduled for Monday-Friday by calling in advance. All items must be approved before they are dropped off.

Items Accepted: Arts & crafts materials, magazines, office supplies, and educational and used videocassettes. All items accepted are used by participants of Easter Seals.

EBENEZER BAPTIST CHURCH

126 Lee Avenue, New Brunswick, NJ 08901

Phone: 732-846-6742

Fax: 732-247-2459

Contact: Rev. Dr. Clarence Brown, Director

Drop-offs: Accepted Tuesdays 8:00 AM-1:30 PM.

Items Accepted: Shoes and sneakers (sneakers for children and adults, male and female, preferably new), toys (no toy guns, all toys in good condition or new will be accepted), and paper goods and plastic utensils, aluminum foil, cups, etc. All items accepted go to the church's needy and homeless recipients.



EDISON ANIMAL CONTROL SERVICES

125 Municipal Boulevard, Edison, NJ 08817

Phone: 732-248-7278

Fax: 732-248-8761

Contact: Jay Elliot

Business Hours: Monday-Friday 8:30 AM-2:00 PM and 3:00 PM-5:00 PM; Wednesday 5:30 PM-8:00 PM; Saturday 10:00 AM-1:00 PM

Drop-offs: Accepted during business hours.

Items Accepted: Bowls (stainless steel), collars, kitty litter, leashes, pet food, shoe boxes, etc. All donations are used by the animals.

EMMAUS RETREAT HOUSE

101 Center Street, Perth Amboy, NJ 08861

Phone: 732-442-7688

Fax: 732-442-5510

Email: Emmaus101@yahoo.com

Contact: Sister Susan

Business Hours: Monday-Friday 9:00 AM-3:00 PM

Drop-offs: Arranged during business hours by calling in advance.

Items Accepted: Baby items, Bibles, books, calculators, cassette/CD players, clothing (men's, women's, children's, and infant's), computers, furniture, glassware, kitchen appliances (countertop), kitchen items, linens, office supplies, refrigerators, silk flowers, sports/recreational equipment, telephones, TVs, VCRs, vacuums. All items must be new or in excellent condition. All items are used by people in need.

FAMILY & CHILDREN'S SERVICES OF CENTRAL NJ

2-4 Kirkpatrick & New Streets, New Brunswick, NJ 08901

Phone: 732-545-0366

Fax: 732-545-3211

Email: ritz@eden.rutgers.edu

Contact: Maritza Tamayo

Business Hours: Monday-Friday 9:00 AM-5:00 PM

Drop-offs: Accepted during regular business hours after phoning in advance.

Items Accepted: Appliances (small only), arts & crafts materials, books (in good condition), car seats (must meet current safety regulations), clothing (to be reused – must be clean, no stains or tears, "gently used"), computers and computer printers (1998 or newer), computer supplies, household furniture (in good condition), shoes (must be clean and in good condition), and small toys (must be in good condition). All items accepted are donated to clients of the agency.



THE FIRST CLASS CHILDCARE CENTER

11 Suttons Lane, Piscataway, NJ 08854

Phone: 732-463-1900
Email: LenoraSquier@hotmail.com
Contact: Lenora Squier
Business Hours: Monday-Friday 6:30 AM-6:30 PM

Drop-offs: Accepted Monday-Friday 9:00 AM-3:00 PM.

Items Accepted: Arts & crafts materials, bicycles, books, car seats, clothing (to be reused), computers and computer supplies, cookware, gardening tools, greeting cards, magazines, office supplies, playground equipment, computer printers, sporting goods, toys, educational videocassettes, and ride-on toys.

FISH, INC.

456 New Market Road, Piscataway, NJ 08854

Phone: 732-968-7925
Fax: 732-968-2870
Contact: Kathy or Julie
Business Hours: Monday-Friday 8:00 AM-12:00 PM

Drop-offs: Accepted Monday-Friday 8:00 AM-12:00 PM. Please call in advance. Pickups may also be arranged by calling in advance.

Items Accepted: Automobiles, bicycles, clothing, eyeglasses, personal items (such as perfume, cologne, and aftershave), shoes, sporting goods, and toys. All items accepted are donated to the needy.

FORUM THEATRE COMPANY

314 Main Street, Metuchen, NJ 08840

Phone: 732-548-4670
Fax: 732-548-4230
Email: Forumtheatre@yahoo.com
Contact: Jason Teague
Business Hours: Monday-Friday 10:30 AM-5:00 PM

Drop-offs: Accepted during business hours. Please call in order to arrange a possible pickup if needed.

Items Accepted: Amplifiers (electronic), duct tape, tape recorders, tools, truck (pickup). Possibly additional items depending on current production. All donations go toward theatre productions.

GEORGE STREET PLAYHOUSE

9 Livingston Avenue, New Brunswick, NJ 08901

Phone: 732-846-2895 ext. 178
Fax: 732-247-9151
Email: seebailey@hotmail.com
Contact: Chris Bailey
Business Hours: Monday-Friday 10:00 AM-6:00 PM

Drop-offs: Accepted during business hours. Pickups may be arranged by calling in advance.

Items Accepted: Clothing (dated, formal, military, vintage, etc.), furniture (unusual pieces, sturdy), hats, lumber (1x3, 1x6, 5/4), painting supplies, plywood (full pieces), prop items (i.e., vintage household items), sewing supplies, silk flowers/trees, theatrical lighting, truck/van, and sound equipment. All items donated go toward productions for main stage shows and the educational touring company.



THE GODDARD SCHOOL

400 Gill Lane, Iselin, NJ 08830

Phone: 732-283-0090

Fax: 732-283-3309

Contact: Michele Hinds or Noel Wortman

Business Hours: Monday-Friday 7:00 AM-7:00 PM

Drop-offs: Accepted Monday-Friday 7:00 AM-7:00 PM.

Items Accepted: Arts & crafts materials, books, sporting goods, and educational videocassettes (all appropriate for ages 2-6), office supplies, and copier and computer paper. All donated items are used by the children.

THE GODDARD SCHOOL OF OLD BRIDGE/MATAWAN

300 Belchase Court, Matawan, NJ 07747

Phone: 732-441-3500

Contact: Paul Cerami

Business Hours: Monday-Friday 7:00 AM-6:00 PM

Drop-offs: Can be made Monday-Friday 9:00 AM-4:00 PM.

Items Accepted: Arts & crafts materials, books, car seats, computers, computer supplies, playground equipment, computer printers, sporting goods, and toys. All items accepted are donated to local charities.

GOODWILL – INDUSTRIES OF GREATER NY & NORTHERN NJ INC. – EAST BRUNSWICK STORE

415 Highway 18, East Brunswick, NJ 08816

Phone: 732-651-1091

Fax: 732-651-1091

Website: www.goodwillny.org

Contact: Armand Nguetsop

Business Hours: Monday-Saturday 10:00 AM-7:00 PM; Sunday 11:00 AM-6:00 PM

Drop-offs: Accepted Monday-Sunday 10:00 AM-7:00 PM.

Items Accepted: Arts & crafts materials (no construction supplies), bicycles, books, clothing (to be reused or recycled), computers (less than 2 years old), computer supplies, cookware, diningware, eyeglasses, greeting cards, office supplies, playground equipment, computer printers, shoes, sporting goods, toys (if in good shape), educational video-cassettes, and used videocassettes. Donations are sold through Goodwill's network of 26 thrift stores in New York City and Northern New Jersey. This system provides employment for people with disabilities, and the revenue generated by reselling the donated merchandise supports Goodwill's rehabilitative programs.

GREATER BRUNSWICK CHARTER SCHOOL

P.O. Box 5727, New Brunswick, NJ 08901

Phone: 732-246-5661

Email: r-pressler@greaterbrunswick.org

Contact: Rick Pressler

Business Hours: Monday-Friday 9:00 AM-4:00 PM

Drop-offs: Please call in order to arrange a drop-off or pickup. There are limits to the quantities of material that can be accepted.

Items Accepted: Appliances (washer, dryer, refrigerator – for 8/04), arts & crafts materials, books (hardcovers, must be in good condition), computers (3 years old or newer, in working order), office furniture (steel desks, computer stations), gardening tools, office supplies, and computer printers (laser printers). All items accepted are used in the school.



HEAVENLY ANGELS

22 Johnstone Street, Edison, NJ 08817

Phone: 732-248-1468
Email: Heavenlyange2@aol.com
Contact: Linda Seickel
Business Hours: 9:00 AM-5:00 PM

Drop-offs: Drop-offs and pickups may be arranged by calling in advance.

Items Accepted: Arts & crafts materials (yarn, fabrics, trims, notions), clothing (gently used baby clothes), office supplies (used for pattern packets for new volunteers), and printers. All items accepted are used by volunteers who knit, crochet, or sew materials into blankets and garments that are donated to babies in New Jersey hospitals.

HIRE ATTIRE

268 Baldwin Street, New Brunswick, NJ 08901

Phone: 732-745-5300 ext. 4501
Fax: 732-745-5325
Contact: Scott Bollwage
Business Hours: Monday-Friday 9:00 AM-4:30 PM

Drop-offs: Please call in advance to schedule a drop-off.

Items Accepted: Men's and women's career clothing. No hats or shoes. All items are donated to people looking to get back to work.

HUBCAP TIRE & WHEEL OF NJ

U.S. Highway 1 North, North Brunswick, NJ 08902

Phone: 732-846-8352
Business Hours: Monday-Friday 10:00 AM-6:00 PM; Saturday 10:00 AM-4:00 PM

Drop-offs: Can be made during regular business hours.

Items Accepted: Hubcaps and wheels. Depending on specific items, most are reused or recycled.

JAMESBURG PUBLIC LIBRARY

229 Gatzmer Avenue, Jamesburg, NJ 08831

Phone: 732-521-0440
Fax: 732-521-6136
Contact: Cindy Yasher
Business Hours: Monday, Wednesday, Thursday 10:00 AM-8:30 PM; Tuesday, Friday 10:00 AM-5:00 PM; and Saturday 10:00 AM-3:00PM

Drop-offs: Accepted during regular business hours on the 1st floor of the library.

Items Accepted: Books and used household batteries.



JEWISH FAMILY & VOCATIONAL SERVICE OF MIDDLESEX COUNTY

515 Plainfield Avenue, Edison, NJ 08837

Phone: 732-777-1940

Email: e.nathanson@jfv.org

Contact: Ellen Nathanson

Business Hours: Monday-Thursday 8:30 AM-5:00 PM; Friday 8:30 AM-4:00 PM

Drop-offs: Welcome during daytime business hours by appointment only.

Items Accepted: Arts & crafts materials (for elderly people to use), automobiles (must be in working order and able to pass inspection), computers (Pentium I or higher), computer printers (laser or inkjet), computer supplies, and office supplies. Items accepted are used by the agency or donated to clients of the agency.

JEWISH HISTORICAL SOCIETY OF CENTRAL JERSEY

228 Livingston Avenue, New Brunswick, NJ 08901

Phone: 732-249-4894

Email: jhscj@cs.com

Website: <http://jewishgen.org/jhscj>

Contact: Rachel Weintraub

Business Hours: Monday-Thursday 10:00 AM-2:00 PM; Friday 9:00 AM-12:00 PM

Drop-offs: Accepted during regular business hours after a phone call in advance. You can also call to arrange for a possible pickup for larger items, such as furniture.

Items Accepted: Arts & crafts materials, books (with Jewish content only), computers (in good working order) and computer supplies, office furniture, gardening tools, magazines (with Jewish content only), office supplies, computer printers (in good working order), and educational videocassettes (with Jewish content only). All items accepted are used by the society for the office, library, or archives.

THE JOHN E. TOOLAN KIDDIE KEEP WELL CAMP

35 Roosevelt Drive, Edison, NJ 08837

Phone: 732-548-6542

Fax: 732-548-9535

Contact: Kevin Cullum

Business Hours: Monday-Friday 9:00 AM-4:00 PM

Drop-offs: Accepted by making prior arrangements during business hours. Pickups for certain items may also be arranged by calling in advance.

Items Accepted: Appliances, arts & crafts materials, books, building materials and tools, printers and computer supplies, cookware and diningware, office and household furniture, gardening tools, office supplies, playground equipment, sporting goods, toys, and educational videocassettes. All items accepted are used to benefit underprivileged children served by the camp.

JOY IN THE CITY CHILDCARE CENTER

99 Broad Street, Perth Amboy, NJ 08861

Phone: 732-442-1546

Fax: 732-442-3301

Contact: Jasmine Williams

Business Hours: Monday-Friday 7:00 AM-6:00 PM

Drop-offs: Can be made during regular business hours.

Items Accepted: Appliances (TVs, VCRs), arts & crafts materials (construction paper, crayons, paint, etc.), children's books, building materials and tools (hammers, nails, screwdrivers), computers (for office use – monitors), any computer supplies, office supplies (computer paper, paper clips, staplers, etc.), playground equipment, toys (anything from 18 months to 5 years-old usage), and educational videocassettes (anything from 18 months to 5 years-old usage). All items accepted are for the usage of the facility.



KIDDIE ACADEMY OF NORTH BRUNSWICK

105 North Center Drive, North Brunswick, NJ 08902

Phone: 732-940-9391
Fax: 732-940-9392
Email: kidnorthbr@aol.com
Contact: Margie Charleston
Business Hours: Monday-Friday 7:00 AM-7:00 PM

Drop-offs: Accepted Monday-Friday 9:00 AM-5:00 PM. Pickups for certain items may be arranged.

Items Accepted: Appliances (small ones only), arts & crafts materials, bicycles and tricycles, children's books, infant/child car seats, clothing (for dress-up play), computers, computer supplies and printers, cookware, diningware (no glass or ceramic), office furniture, greeting cards, magazines, office supplies, playground equipment, sporting goods, toys, typewriters, and educational videocassettes. All items accepted are used to benefit the children of the center.

KINDERCARE LEARNING CENTER – EAST BRUNSWICK

610 Cranbury Road, East Brunswick, NJ 08816

Phone: 732-613-1886
Fax: 732-613-0724
Email: c1467@mail.kindercare.com
Contact: Gisele Bretan
Business Hours: Monday-Friday 6:30 AM-7:00 PM

Drop-offs: Can be made during business hours after a phone call in advance.

Items Accepted: Arts & crafts materials, children's books, clothing (for dress-up play), computers and computer printers (in good working order), computer supplies, gardening tools, greeting cards, office supplies, playground equipment, toys and games, educational videocassettes, and scrap paper. All items accepted are used for the benefit of the children.

LATINOS UNITED FOR PREVENTION & EDUCATION (LUPE)

Raritan Bay Medical Center, 530 New Brunswick Avenue, Perth Amboy, NJ 08861

Phone: 732-324-5028
Fax: 732-324-4838
Contact: Nirmita Sanghazi
Business Hours: Monday-Friday 8:30 AM-5:00 PM

Drop-offs: Accepted by appointment. Please call to schedule a drop-off or a possible pickup.

Items Accepted: Clothing (winter-gloves, hats, scarves), feminine products, furniture, makeup, perfume, and toys (accepts new toys during Christmas). All donations are given to clients, people who are at risk for AIDS and HIV or those who are already positive, and their children.



LEARNING IN PLAYGROUP AND A LITTLE CLASS PRESCHOOL

350 Independence Boulevard, North Brunswick, NJ 08902

Phone: 732-940-7772
Email: Tsipos2222@aol.com
Contact: Lynn Sipos
Business Hours: 7:00 AM-7:00 PM

Drop-offs: Please call to arrange for a drop-off.

Items Accepted: Arts & crafts materials, bicycles, books, building materials and tools, computers, computer supplies, household furniture, gardening tools, greeting cards, magazines, office supplies, playground equipment, sporting goods, toys, educational and used videocassettes, wallpaper samples, and paper. All items are used by the preschool students.

LENSCRAFTERS – EAST BRUNSWICK

Brunswick Square Mall, 755 Route 18 South, East Brunswick, NJ 08816

Phone: 732-698-0007
Fax: 732-698-9965
Contact: Kathleen Dill
Business Hours: Monday-Friday 10:00 AM-9:00 PM; Saturday 10:00 AM-6:00 PM; Sunday 12:00 PM-5:00 PM

Drop-offs: Accepted during business hours.

Items Accepted: Prescription eyeglasses and sunglasses. All items accepted are donated as part of the "Gift of Sight Program."

LENSCRAFTERS – EAST BRUNSWICK

434 Route 18 West, East Brunswick, NJ 08816

Phone: 732-613-7300
Fax: 732-613-7304
Contact: Phil Lehr
Business Hours: Monday-Friday 10:00 AM-9:00 PM; Saturday 10:00 AM-6:00 PM; Sunday 12:00 PM-5:00 PM

Drop-offs: Accepted during business hours.

Items Accepted: Prescription eyeglasses and sunglasses. All items accepted are donated as part of the "Gift of Sight Program."

LENSCRAFTERS – EDISON

Menlo Park Mall, 501 Menlo Park Drive, Edison, NJ 08837

Phone: 732-548-9879
Fax: 732-548-9731
Contact: Vladamir Cordero
Business Hours: Monday-Saturday 10:00 AM-9:30 PM; Sunday 11:00 AM-6:00 PM

Drop-offs: Accepted during business hours.

Items Accepted: Prescription eyeglasses and sunglasses. All items accepted are donated as part of the "Gift of Sight Program."



LENSCRAFTERS – WOODBRIDGE

161 Woodbridge Center, Woodbridge, NJ 07095

Phone: 732-855-7900

Fax: 732-855-7904

Contact: Frank Favale

Business Hours: Monday-Saturday 10:00 AM-9:30 PM; Sunday 11:00 AM-6:00 PM

Drop-offs: Accepted during business hours.

Items Accepted: Prescription eyeglasses and sunglasses. All items accepted are donated as part of the "Gift of Sight Program."

LIFE CHOICES RESOURCE CENTER

576 Inman Avenue, Colonia, NJ 07067

Phone: 732-499-8676

Fax: 732-499-7104

Business Hours: Monday-Friday 9:30 AM-4:00 PM; Thursday 5:30 PM-7:00 PM

Drop-offs: Made during business hours by calling in advance.

Items Accepted: Baby items, clothing (maternity, baby), baby food, walkers, car seats, high chairs, cribs, playpens, etc. (all must be newer and up to current safety standards), and furniture (selected). All items accepted are donated to women and families in need.

LION OF JUDAH FAITH CENTER, INC.

175 Buckelew Avenue, Jamesburg, NJ 08831

Phone: 609-708-2582

Contact: Maryann Savagel

Business Hours: Monday-Friday 7:30 AM-3:30 PM

Drop-offs: Accepted Monday-Friday 8:00 AM-11:00 AM and 3:00 PM-6:00 PM. Please call and make prior arrangements for drop-offs or possible pickups.

Items Accepted: Appliances, automobiles (vans, cars, or buses), bicycles, building materials and tools, car seats, clothing to be reused, computers and computer supplies, cookware, diningware, household and office furniture, greeting cards, office supplies, computer printers, shoes, typewriters, educational videocassettes, and round or rectangular tables and chairs for church use. All items are donated to the needy or used within the church.

LITERACY VOLUNTEERS OF MIDDLESEX COUNTY

11 Stephen Street, South River, NJ 08882

Phone: 732-432-8000

Fax: 732-432-8189

Email: LVM24LIBS@aol.com

Contact: Liqita Rafaels, Executive Director

Business Hours: Monday-Friday 9:00 AM-5:00 PM

Drop-offs: Accepted Monday-Friday 9:00 AM-5:00 PM at 11 Stephen Street in South River. To arrange for a possible pickup, call in advance.

Items Accepted: Arts & crafts materials, books, computers, computer supplies, office furniture, office supplies, and educational videocassettes. All items accepted are used by local affiliates, adult students learning to read, and children in family literacy programs.



MANAVI

P.O. Box 3103, New Brunswick, NJ 08903

Phone: 732-435-1414

Fax: 732-435-1411

Email: manavi@att.net (staff Email)

Business Hours: Monday-Friday 9:00 AM-5:00 PM

Drop-offs: Please contact the organization in order to arrange a drop-off.

Items Accepted: Clothing (women's – seasonal) and toiletries. Accepts on an as-needed basis only: children's clothing, furniture, toys, and housewares. All donations are utilized by the residents of the transitional home and the South Asian women's organization working on violence against women issues.

MARCH OF DIMES (CENTRAL JERSEY)

5 Cedarbrook Drive, Cranbury, NJ 08512

Phone: 609-655-7400

Fax: 609-655-1520

Email: Johnmajane@marchofdimes.org

Contact: John Majane, Executive Director

Business Hours: Monday-Friday 9:00 AM-5:00 PM

Drop-offs: Accepted during regular business hours. Call in order to arrange a possible pickup.

Items Accepted: Bookcases, computers and computer supplies, desks, file cabinets, office supplies, TVs, VCRs, and children's clothing (new). All items accepted are used in the office or donated to other nonprofit organizations and shelters.

MARIO GONZALEZ CHILD DEVELOPMENT CENTER

22 Joyce Kilmer Avenue, New Brunswick, NJ 08901

Phone: 732-828-4709

Fax: 732-828-8591

Email: prabpreschool@aol.com

Contact: Joyce Chase

Business Hours: Monday-Friday 7:30 AM-5:30 PM

Drop-offs: Accepted during business hours at 18 Drift Street in New Brunswick. Please call in advance.

Items Accepted: Books (preschool), cassettes/CDs (children's), cassette/CD players, clothing (children's), computers, musical instruments, shelves, toys, videos (children's). All items accepted are used by the center.

METUCHEN-EDISON YMCA

65 High Street, Metuchen, NJ 08840

Phone: 732-548-2044

Contact: Christine Tolley

Business Hours: Monday-Friday 6:00 AM-10:00 PM

Drop-offs: Accepted Monday-Friday 10:00 AM-6:00 PM. Pickups for certain items may also be arranged by calling in advance. Please call in advance for drop-offs, also.

Items Accepted: Arts & crafts materials, books, computer software, cookware, office furniture, greeting cards, office supplies, playground equipment, sporting goods, toys, educational and used videocassettes, board games, and playing cards. All items accepted are used to benefit youth enrichment programs.



METUCHEN PUBLIC LIBRARY

480 Middlesex Avenue, Metuchen, NJ 08840

Phone: 732-632-8526

Fax: 732-632-8535

Email: mkokola@lmxac.org

Contact: Melody Kokola

Business Hours: Monday, Tuesday, Thursday 10:00 AM-9:00 PM; Wednesday, Friday, Saturday 10:00 AM-5:00 PM; Sunday 1:00 PM-5:00 PM (mid-September to end of April only); Summer Saturday Hours: 10:00 AM-1:00 PM

Drop-offs: Please call in order to arrange a drop-off.

Items Accepted: Books, DVDs, and CDs. No magazines, textbooks, or videotapes.

MIDDLESEX BORO PUBLIC LIBRARY

1300 Mountain Avenue, Middlesex, NJ 08846

Phone: 732-356-6602

Fax: 732-356-8420

Email: cchellis@lmxac.org

Contact: Carole Chellis

Business Hours: Monday-Thursday 10:00 AM-9:00 PM; Friday, Saturday 10:00 AM-5:00 PM; Sunday 1:00 PM-5:00 PM (October to May only)

Drop-offs: Made at the library during business hours.

Items Accepted: Books. No encyclopedias, magazines, or textbooks. All donated books go toward the ongoing book sale.

MIDDLESEX COUNTY OFFICE FOR THE DISABLED

75 Bayard Street, New Brunswick, NJ 08901

Phone: 732-745-4013

Fax: 732-296-7971

Email: larry.rivera@co.middlesex.nj.us

Contact: Larry Rivera

Business Hours: Monday-Friday 8:30 AM-4:15 PM

Drop-offs: Please call to arrange for a drop-off or pickup.

Items Accepted: Computers, durable medical equipment, and cell phones. All items accepted are donated to disabled persons.

MIDDLESEX COUNTY PLAYS-IN-THE-PARK

P.O. Box 661, New Brunswick, NJ 08903

Phone: 732-548-2885

Fax: 732-548-1484

Email: pipoffice@playsinthepark.com

Website: www.playsinthepark.com

Contact: Gary Cohen

Business Hours: Monday-Friday 8:30 AM-4:00 PM

Drop-offs: Donations are accepted Monday-Friday 9:00 AM-4:00 PM at the Stephen J. Caestro Theater – Plays-in-the-Park at Roosevelt Park, Edison, NJ. Please call to arrange a possible pickup. A tax donation letter is available.

Items Accepted: Arts & crafts materials, books, building materials and tools, clothing (antique only), computers and computer supplies, office supplies, computer printers, shoes (antique only), and videocassettes (educational and used). All items accepted are used by the theater.



MIDDLESEX INTERFAITH PARTNERS WITH THE HOMELESS (MIPH)

Amandla Crossing Transitional Housing Facility, 100 Mitch Snyder Drive, Edison, NJ 08837

Phone: 732-549-5559
Fax: 732-549-2105
Contact: Jill Millerand, Donations Coordinator
Business Hours: Monday-Friday 9:00 AM-4:30 PM

Drop-offs: Due to limited storage space all donations must be preapproved by calling the coordinator. Drop-offs of preapproved donations can only be made on weekdays during business hours. Pickups for certain items may also be arranged by calling the coordinator.

Items Accepted: Infant/child car seats, women/baby/children's clothing, cookware and diningware, small kitchen appliances (blenders, microwaves), computers (486 or more recent), computer printers (ink or laser), children's puzzles, art supplies, children's bicycles (up to 20 inches). All items accepted are used by homeless women and their children.

MI ESCUELITA DAY CARE CENTER

100 First Street, Perth Amboy, NJ 08861

Phone: 732-826-4681
Fax: 732-826-3082
Contact: Marilyn Trieber
Business Hours: Monday-Friday 7:30 AM-5:00 PM

Drop-offs: Accepted Monday-Friday 9:00 AM-5:00 PM. Pickups may also be arranged by calling in advance.

Items Accepted: Arts & crafts materials, bicycles, books, computers, printers and computer supplies, office furniture, magazines, playground equipment, toys, typewriters, and used and educational videocassettes. All items accepted are used at the agency or donated to the needy.

MY SISTER'S CLOSET CONSIGNMENT SHOP

89 Main Street, South River, NJ 08882

Phone: 732-651-6444
Email: mysisterscloset@juno.com
Contact: Lilly
Business Hours: Tuesday-Saturday 11:00 AM-4:00 PM; Wednesday 11:00 AM-8:00 PM

Drop-offs: Accepted by appointment only and are limited to 10-20 items.

Items Accepted: Clothing (must be clean, in good condition, "gently used," or new), diningware, shoes, quality handbags, and small decorative or giftware items.

NAOMI'S WAY TRANSITIONAL HOUSING FOR WOMEN & CHILDREN

1-4 Roosevelt Avenue, New Brunswick, NJ 08901

Phone: 732-565-7974 or 732-729-0850
Fax: 732-729-0794
Contact: Wesley Moore
Business Hours: Monday-Friday 9:00 AM-7:00 PM

Drop-offs: Accepted during business hours. Please call ahead for an appointment.

Items Accepted: Baby items, clothing (women's, teens', children's), cleaning supplies, curtains, hangers, housewares, lamps, linens, magazines (current), rugs, stereo equipment, TVs, cosmetics, and undergarments (new or in good condition). All items accepted are given to the homeless, or those in need, on an as-needed basis.



NEW BRUNSWICK PUBLIC SCHOOLS ADULT LEARNING CENTER

268 Baldwin Street, Second Floor, New Brunswick, NJ 08901

Phone: 732-846-2968

Fax: 732-745-5325

Contact: Scott Bollwage

Business Hours: Monday-Thursday 8:30 AM-8:30 PM; Friday 8:30 AM-4:30 PM

Drop-offs: Welcome Monday-Friday 9:00 AM-4:00 PM. Please call for information regarding drop-off quantity limits.

Items Accepted: Gently used men's and women's career clothing. All items accepted are redistributed to men and women who are entering the workforce.

NEW BRUNSWICK SENIOR CITIZEN CENTER

81 Huntington Street, New Brunswick, NJ 08901

Phone: 732-745-5038

Fax: 732-246-1040

Contact: Melanie Ford

Business Hours: Monday-Friday 8:30 AM-4:30 PM

Drop-offs: Welcome Monday-Friday 9:00 AM-4:00 PM.

Items Accepted: Arts & crafts materials, computers, printers and computer supplies, office furniture, gardening tools, greeting cards (get-well and sympathy cards only), office supplies, and used and educational videocassettes. All items accepted are used by senior center clients.

NEW EYES FOR THE NEEDY, INC.

549 Millburn Avenue, Short Hills, NJ 07078

Phone: 973-376-4903

Fax: 973-376-3807

Contact: Maryann Zisocci

Business Hours: Monday-Thursday 9:00 AM-4:00 PM; Friday 9:00 AM-12:00 PM

Drop-offs: Mail items to address above, or drop-offs are welcome during regular business hours. You may also drop off a box of donations in front of the building at any hour.

Items Accepted: Reusable eyeglasses, jewelry (real, costume, antique), hearing aids, watches, dental gold, and silver items of all kinds. Eyeglasses are redistributed to medical missions and hospitals in developing countries overseas. Other items are sold to help fund our new prescription eyeglass program for needy Americans.

PARTS PROGRAM/NEW JERSEY ASSOCIATION ON CORRECTION

685 State Street, Perth Amboy, NJ 08861

Phone: 732-442-2525

Fax: 732-442-2883

Contact: Linda Rodgers

Business Hours: Monday-Friday 8:00 AM-4:00 PM

Drop-offs: Welcome Monday-Friday 8:00 AM-4:00 PM, but please call in advance. Pickups for certain items may also be arranged by calling in advance.

Items Accepted: Appliances, arts & crafts materials, bicycles and tricycles, books, infant/child car seats, clothing, computers, printers and computer supplies, cookware and diningware, household and office furniture, office supplies, shoes, toys, typewriters, and used and educational videocassettes. All items accepted are donated to women and children of the program.



PINE GROVE COOPERATIVE NURSERY SCHOOL

40 Davidson Road, Piscataway, NJ 08854

Phone: 732-463-8555

Contact: Mary Porcelli

Business Hours: Monday-Friday 9:00 AM-3:00 PM (September to June)

Drop-offs: Please call in advance to schedule a drop-off appointment or for information regarding pickup and quantity limitations. All donations must be suitable for children ages 5 and under.

Items Accepted: Arts & crafts materials, tricycles or small riding toys, children's books, infant/child car seats, wooden building blocks, gardening tools, office supplies, playground equipment, toys, and used and educational videocassettes. All items accepted are used by the preschool students.

PLAINSBORO PUBLIC LIBRARY

641 Plainsboro Road, Plainsboro, NJ

Phone: 609-275-2897

Fax: 609-799-5883

Email: baeckler@lmxac.org

Contact: Jinny Baeckler

Business Hours: Monday, Friday 9:00 AM-5:30 PM; Tuesday-Thursday 9:00 AM-8:30; Saturday-Sunday 10:00 AM-5:00 PM

Drop-offs: Accepted during business hours.

Items Accepted: Books. All items accepted are used for the library or to benefit book sale. All proceeds go directly to the purchase of library materials.

POILE TZEDEK

145 Neilson Street, New Brunswick, NJ 08901

Phone: 732-545-6123

Contact: Rabbi

Drop-offs: Please call in order to arrange a drop-off. There are no set hours.

Items Accepted: Arts & crafts supplies, baby items, bags (paper, plastic, sandwich), bicycles, blankets, board games, books (children's, inspirational), calculators, cars, car seats, cassettes/CDs, cassette/CD players, cell phones, clothing (men's, women's, children's, maternity), computers, computer printers, computer scanner, cots, decorations (Jewish), diapers, furniture, health care items, housewares, kitchen appliances (countertop), kitchen items, linens, office supplies, paper products, pillows, sports/recreational equipment, software (children's), strollers, stuffed animals, toiletries, toys, typewriters, TVs, VCRs, videos (children's and G rated), word games.

THE PRIDE CENTER OF NEW JERSEY, INC.

211 Livingston Avenue, P.O. Box 5130, New Brunswick, NJ 08903

Phone: 732-846-2232

Email: INFO@pridecenter.org

Contact: Harold Goldenberg

Business Hours: Tuesday 11:00 AM-4:00 PM; Daily 7:00 PM-10:00 PM; and by chance

Drop-offs: Welcome Tuesday 11:00 AM-4:00 PM and other times by prior arrangement.

Items Accepted: Books, computers, printer and computer supplies, office supplies, bookcases, and used and educational video-cassettes (gay/lesbian/bisexual/transgender-related material preferred). All donations are used by the center.



PUERTO RICAN ACTION BOARD PRESCHOOL

18 Drift Street, New Brunswick, NJ 08901

Phone: 732-828-4709
Fax: 732-828-8591
Email: Prabpreschool@aol.com
Contact: Joyce Chase
Business Hours: Monday-Friday 7:30 AM-5:30 PM

Drop-offs: Can be made during business hours after a phone call in advance.

Items Accepted: Appliances (bonnet hair dryers, handheld hair dryers), arts & crafts materials, children's books, car seats, cookware, diningware (no glass or ceramic), greeting cards, magazines, office supplies, sporting goods, toys, typewriters.

PUERTO RICAN ASSOCIATION FOR HUMAN DEVELOPMENT, INC.

100 First Street, Perth Amboy, NJ 08861

Phone: 732-442-1081
Fax: 732-826-3082
Email: prahd@prodigy.net
Contact: Lydia Trinidad, Executive Director
Business Hours: Monday-Friday 9:00 AM-5:00 PM

Drop-offs: Accepted Monday-Friday 9:00 AM-4:30 PM. Pickups for certain items may also be arranged by calling in advance.

Items Accepted: Appliances, arts & crafts materials, books, building materials and tools, clothing, computers, computer supplies and printers, cookware, diningware, eyeglasses, household furniture, office furniture, office supplies, playground equipment, sporting goods, toys, typewriters, and used and educational videocassettes. All items accepted are used at the agency or donated to the needy.

RAINBOW ACADEMY PRE-SCHOOL

23 Gills Lane, Iselin, NJ 08830

Phone: 732-404-1010
Fax: 732-404-1025
Contact: Julia Palzarano
Business Hours: Monday-Friday 7:00 AM-6:30 PM

Drop-offs: Accepted at the academy Monday-Friday 7:00 AM-6:30 PM with a phone call in advance. All items must be in good condition, appropriate for children ages 8 and under, and approved before a drop-off is made.

Items Accepted: Arts & crafts materials, books, computers, printers, and toys. All donations are used in the child care center.



RARITAN BAY MENTAL HEALTH CENTER SALES BY THE BAY THRIFT STORE

315 State Street, Perth Amboy, NJ 08861

Phone: 732-442-8933

Fax: 732-442-1938

Contact: Debbie Klein

Business Hours: Monday, Wednesday, Friday 9:30 AM-3:00 PM; Tuesday, Thursday 10:30 AM-3:00 PM

Drop-offs: Accepted during business hours. To schedule a pickup, call one week ahead for most items, and call two weeks ahead for furniture. Furniture acceptance may be limited.

Items Accepted: Appliances (small, no refrigerators, washers, or dryers), arts & crafts materials, bicycles (in working order only), books (no encyclopedias), building materials and small tools (in working order only), clothing to be reused and recycled, computers and computer printers (3 years old or newer), computer supplies, cookware, diningware (in good condition), household furniture, gardening tools, greeting cards, shoes, sporting goods, toys, and educational and used videocassettes. All items accepted are sold to others or donated when there is a surplus.

RARITAN VALLEY YMCA

206 Dunhams Corner Road, East Brunswick, NJ 08816

Phone: 732-257-4114

Fax: 732-257-5762

Contact: Ron Fournier, Executive Director

Business Hours: Monday-Friday 7:30 AM-10:00 PM; Saturday 9:00 AM-5:00 PM

Drop-offs: Accepted Monday-Friday 9:00 AM-1:00 PM with a phone call in advance. All items must be in working order.

Items Accepted: Appliances, arts & crafts materials, bicycles, books, building materials, tools, computers, printers and computer supplies, office furniture, gardening tools, office supplies, playground equipment, sporting goods, toys, and used and educational videocassettes. All donations are used by the YMCA.

ROOSEVELT CARE CENTER

1 Roosevelt Drive, Edison, NJ 08817

Phone: 732-321-6800 x 387

Fax: 732-321-0846

Website: www.rooseveltcarecenter.com

Contact: Francine Carroll (Recreation Department)

Business Hours: Monday-Friday 8:30 AM-4:30 PM

Drop-offs: Scheduled during regular business hours by calling in advance.

Items Accepted: Arts and crafts materials, aquariums (small fish tanks and supplies, bedding and food for a guinea pig), books (large print), bookcases, costume jewelry, handheld games, game units (Gameboy, Nintendo, Playstation, etc.), gardening supplies (hand tools), small kitchen appliances, pots, pans, and other supplies for our cooking program, magazines, pictures, picture frames, Ping-Pong table, radios, silk flowers for crafting or with vases and baskets for decorating, TV table, television, VCRs, videos, CDs and DVDs. All donated items are used for the residents of the facility.



ROSE MOUNTAIN CARE CENTER

Routes 1 and 18, New Brunswick, NJ 08901

Phone: 732-828-2400

Fax: 732-828-2494

Contact: Jonathan Rosenberg, Administrator

Business Hours: Monday-Friday 9:00 AM-5:00 PM

Drop-offs: Welcome Monday-Friday 9:00 AM-5:00 PM with a phone call in advance.

Items Accepted: Arts & crafts materials, computers, printers, magazines, and used/educational videocassettes. All donations benefit the residents of the facility.

RUTGERS THEATRE ARTS DEPARTMENT

2 Chapel Drive, Douglass Campus, New Brunswick, NJ 08901

Phone: 732-932-9891 ext. 35

Contact: Cathy Homa-Rocchio

Business Hours: Monday-Friday 9:30 AM-5:30 PM (summer hours vary)

Drop-offs: Call to arrange for a drop-off or possible pickup.

Items Accepted: Clothing (formal, military, vintage – must be in good condition), eyeglasses, fabric, hats, jewelry, neckties, prop items, scarves, sewing supplies, shoes, wigs. All items accepted are used for productions.

SECOND WARD BLOCK CLUB & CRIME WATCH

123 Livingston Avenue, New Brunswick, NJ 08901

Phone: 732-247-4966

Email: swnbc@bigfoot.com

Contact: Morris

Drop-offs: Accepted by appointment only; please call to arrange either a drop-off or a possible local pickup.

Items Accepted: Appliances (small appliances, microwaves – must be working and in decent condition), TVs, clothing to be reused (clean and presentable), cookware (pots, pans – salable), diningware (dishes, utensils – salable), household and office furniture (in good shape, smaller items), gardening tools, shoes (presentable), sporting goods, toys (safe and intact), and other small items of use to resell for community fund raisers. All items accepted are sold as fund-raisers for scholarships or given to the needy.

SELF-HELP CENTER OF NEW BRUNSWICK

96 Bayard Street, P.O. Box 1142, Lower Level, Suite B17, New Brunswick, NJ 08903-1142

Phone: 732-296-0303

Fax: 732-296-8021

Email: Jaksteve@aol.com

Contact: Steve Jakubowycz

Business Hours: Wednesday, Thursday 3:00 PM-7:00 PM; Sunday 1:00 PM-5:00 PM

Drop-offs: Accepted at 96 Bayard Street, Lower Level, Suite B17, New Brunswick. Please call ahead to schedule a drop-off or a pickup (days and hours are negotiable).

Items Accepted: Appliances (blender), arts & crafts materials (paints, canvas, jewelry, glue, brushes, photo albums), books, clothing to be reused (suits, slacks, dungarees, shirts, sweaters), computers (working – CPU, monitors, keyboards, faxes, copiers, scanners, mouse, software), cookware (pots, pans, George Foreman grill), diningware (dishes, bowls, forks, knives, spoons, cups, glasses), greeting cards, magazines, office supplies (8 ½" x 11" paper, pens/pencils, tape, paper clips), computer printers, educational videocassettes (mental health, travel, health, history), used videocassettes, paper plates and cups, plastic forks, knives, and spoons, garbage bags, paper towels and napkins. All items accepted are donated to the center or to low-income mentally ill people.



SPOTSWOOD PUBLIC LIBRARY

548 Main Street, Spotswood, NJ 08884

Phone: 732-251-1515

Fax: 732-251-1515

Email: spotswood@skyweb.net

Contact: Mary Faith Chmiel

Business Hours: Monday, Wednesday, Thursday 10:30 AM-8:30 PM; Tuesday, Friday 10:30 AM-5:30 PM; Saturday 10:00 AM-4:00 PM

Drop-offs: Accepted during regular business hours by appointment only. Under special circumstances pickups may also be arranged by calling ahead. All items must be relatively new, in good condition, and in working order.

Items Accepted: Arts & crafts materials, books (less than 10 years old; no textbooks), computers, printers, and computer supplies, office supplies, magazines (2 years old or less), used videocassettes, CDs or CD-ROMs, and audiocassettes. All donations are used by the library or sold.

ST. PETER'S EPISCOPAL CHURCH THRIFT STORE

505 Main Street, Spotswood, NJ 08884

Phone: 732-251-4113

Contact: Mary Heffron

Business Hours: Tuesday 10:00 AM-2:00 PM/7:00 PM-8:00 PM; Wednesday 6:00 PM-8:00 PM; Thursday 10:00 AM-2:00 PM; Saturday 10:00 AM-1:00 PM

Drop-offs: Welcome at the shop during regular business hours only.

Items Accepted: Household linens, glassware, and in-season clothing only. We are a small well-stocked shop with a large selection of men's, women's, children's, infant's, and now also junior's clothing sections. All items accepted are sold or donated to those in need.

ST. PETER'S UNIVERSITY HOSPITAL

254 Easton Avenue, New Brunswick, NJ 08901

Phone: 732-745-8528

Fax: 732-247-9888

Contact: Department of Planning and Community Affairs

Business Hours: Monday-Friday 8:30 AM-5:00 PM

Drop-offs: Accepted Monday-Friday 8:30 AM-5:00 PM and must be arranged by a phone call in advance only.

Items Accepted: Arts & crafts materials, books, and toys (appropriate for small children). All items must be in excellent condition. All items accepted are used by the Pediatric Clinic and Community Outreach Program.

ST. VINCENT DEPAUL

1119 Englishtown Road, Old Bridge, NJ 08857

Phone: 732-251-5285

Contact: Volunteers

Business Hours: Tuesday 10:00 AM-2:00 PM; Thursday 10:00 AM-12:00 PM; Friday 10:00 AM-2:00 PM; Saturday 10:00 AM-1:00 PM

Drop-offs: Accepted during business hours.

Items Accepted: Baby items, Bibles, books, cassette/CD players, clothing and shoes (men's, women's, children's), computers, glassware, kitchen appliances (small/countertop), kitchen items, linens, telephones, TVs, VCRs, videos, watches. All items accepted are resold, and the profit is donated to the needy.



TEMPLE EMANU-EL

100 James Street, Edison, NJ 08820

Phone: 732-549-4442 ext. 14
Contact: Rabbi Alfred B. Landsberg
Business Hours: Monday-Friday 9:00 AM-5:00 PM

Drop-offs: Welcome Monday-Wednesday 9:00 AM-12 PM. All donations must be in working order.

Items Accepted: Computers, printers and computer supplies, eyeglasses, and educational videocassettes. All items accepted are used by the religious school or donated to the needy.

VIETNAM VETERANS OF AMERICA

8605 Cameron Street, Suite 400, Silver Spring, MD 20910

Phone: 301-585-4000
Fax: 301-585-3661
Contact: Quentin Butcher
Business Hours: Monday-Saturday 9:00 AM-5:30 PM

Drop-offs: Accepted Monday-Saturday 9:00 AM-5:00 PM at the Red, White & Blue Thrift store, located at 2055 Nottingham Way, Mercerville, NJ 08619. Please call 1-800-775-8387 for more information concerning drop-offs or for pickup arrangements.

Items Accepted: Small appliances, arts & crafts materials, bicycles, books, infant/child car seats, clothing, printers and computer supplies, cookware and diningware, gardening tools, office supplies, playground equipment (small), shoes, sporting goods, toys, typewriters, and used and educational videocassettes. All items collected are sold at area thrift stores.

WE CASH CLOTHES "FOR A CAUSE" INC.

Phone: 888-516-2274
Email: wcnynj@aol.com
Website: www.wecashclothes.com
Business Hours: Monday-Friday 9:00 AM-5:00 PM

Drop-offs: Please call or visit the Website and use email to arrange for a pickup.

Items Accepted: Belts, bicycles, clothing (men's, women's, children's), hats, linens, neckties, pocketbooks, shoes (paired), stuffed animals. No blankets or pillows. All items are resold and the proceeds go toward the needy in the New York/New Jersey area.

WOODROW WILSON SCHOOL

133 Tunison Road, New Brunswick, NJ 08901

Phone: 745-5300 ext. 5319
Fax: 732-937-7579
Contact: Susan Mahde
Business Hours: Monday-Friday 9:00 AM-3:00 PM (school calendar)

Drop-offs: Please call to schedule a drop-off.

Items Accepted: K-8 books (age appropriate), encyclopedia sets, atlases, and almanacs. All must be in good condition. All items accepted are used in the public school library.



SECTION TWO

Special Recycling Programs



CLOTHES HANGER RECYCLING



Listed below are dry cleaners within Middlesex County who accept wire clothes hangers for recycling. Most of these establishments require that the hangers be returned in good condition so that they may be reused. Please check with the individual businesses listed below for any special requirements or restrictions as to the quantity of the hangers accepted.

East Brunswick

Black Dry Cleaning Inc.
320 Rues Lane, East Brunswick
Telephone: 732-257-1390

Capri Cleaners Inc.
582 State Highway Route 18, East Brunswick
Telephone: 732-257-5111

Swank Cleaners
210 State Highway Route 18, East Brunswick
Telephone: 732-249-2255

Edison

Astra Cleaners
1905 State Highway 27, Edison
Telephone: 732-985-6464

Edison Aqua Cleaners
2242 Woodbridge Avenue, Edison
Telephone: 732-985-8846

Estoril Tailoring & Cleaning
125 State Highway 27, Edison
Telephone: 732-548-1936

Family Plaza Dry Cleaners
2595 Woodbridge Avenue, Edison
Telephone: 732-248-8650

Fashion Care Cleaners & Tailors
130 Plainfield Avenue, Edison
Telephone: 732-572-1181

Lamp 2 Cleaners
3 Stephenville Parkway, Edison
Telephone: 732-548-2555

La Ritz Cleaners
2058 State Highway 27 (Nixon Plaza), Edison
Telephone: 732-287-4777

Mary's Cleaners
518 Old Post Road, Edison
Telephone: 732-248-3775

Sunshine Cleaners
4 Brunswick Avenue, Edison
Telephone: 732-572-2262

Highland Park

Al's Dry Cleaners
14 South 2nd Avenue, Highland Park
Telephone: 732-249-7379

Highland Park Cleaners
412 Raritan Avenue, Highland Park
Telephone: 732-572-2324

One Hour Martinizing
141 Raritan Avenue, Highland Park
Telephone: 732-249-9163

Rainbow Cleaners
705 Raritan Avenue, Highland Park
Telephone: 732-572-3896

Silver Hanger of Highland Park
435 Raritan Avenue, Highland Park
Telephone: 732-828-5050

Jamesburg

Suburban Cleaners
12 West Railroad Avenue, Jamesburg
Telephone: 732-521-0182

Metuchen

George's Tailoring & Dry Cleaning
424 Main Street, Metuchen
Telephone: 732-548-5334

Roxy Fashion Cleaners
207 Main Street, Metuchen
Telephone: 732-548-1734

Middlesex

Delta Cleaners
440 Union Avenue, Middlesex
Telephone: 732-356-0007

Hima Drycleaners Inc.
1278 Boundbrook Road, Middlesex
Telephone: 732-560-8330

Milltown

Arthur James Cleaners
112 Ryders Lane, Milltown
Telephone: 732-249-2361

Diamond Dry Cleaners
4 Lukach Court, Milltown
Telephone: 732-828-8767

Mr. A's Quality Cleaners
40 South Main Street, Milltown
Telephone: 732-846-6866

(continued...)



CLOTHES HANGER RECYCLING

Monroe

Betty Brite Cleaners of Concordia
Concordia Shopping Center (Perrineville Road), Monroe
Telephone: 609-655-5445

Monroe French Cleaners
399 Spotswood-Englishtown Road, Monroe
Telephone: 732-723-2700

One Hour Martinizing Dry Cleaning
477 Spotswood-Englishtown Road, Monroe
Telephone: 732-521-3878

Parkway Cleaners
337 Applegarth Road, Monroe
Telephone: 609-655-0007

New Brunswick

Town Cleaners
295 Georges Road, New Brunswick
Telephone: 732-246-1880

North Brunswick

Cameo Cleaners
975 U.S. Highway 1, North Brunswick
Telephone: 732-545-7373

Choice Cleaners
608 Livingston Avenue, North Brunswick
Telephone: 732-247-7774

Plaza 27 Cleaners
1980 State Highway 27, North Brunswick
Telephone: 732-940-7575

Soap Box Laundrymat & Cleaners
1345 U.S. Highway 1 South, North Brunswick
Telephone: 732-846-2323

T & L Dry Cleaning
2184 U.S. Highway 130, North Brunswick
Telephone: 732-398-3700

U.S. Dry Cleaners
2226 U.S. Highway 130, North Brunswick
Telephone: 732-821-8345

Old Bridge

Madison Dry Cleaners
61 Route 34, Old Bridge
Telephone: 732-721-5400

Old Bridge Cleaners
1063 Route 9 North, Old Bridge
Telephone: 732-316-0888

Piscataway

Personal Touch Cleaners
1322 Centennial Avenue, Piscataway
Telephone: 732-463-1144

Silver Hanger of Piscataway Inc.
1347 Stelton Road, Piscataway
Telephone: 732-393-9500

Sayreville

Betty Brite Cleaners
499 Ernston Road, Sayreville
Telephone: 732-721-6409

Sayreville Cleaners
3101 Bordentown Avenue, Sayreville
Telephone: 732-727-5751

South Brunswick

Star Quality Cleaner
365 Georges Road, Dayton
Telephone: 732-329-6462

South Plainfield

Park Avenue Cleaners
1712 Park Avenue, South Plainfield
Telephone: 732-755-6594

South River

Pride Cleaners & Tailors
97 Main Street, South River
Telephone: 732-254-3585

Spotswood

Betty Brite Cleaners of Spotswood
83 Old Stage Road, Spotswood
Telephone: 732-251-0993

Woodbridge

Introcaso Cleaners
494 Avenel Street, Avenel
Telephone: 732-636-0437



WHAT CAN I DO WITH MY OLD CELL PHONE?

The national Donate a Phone campaign collects wireless phones to benefit victims of domestic violence. These phones allow victims to call for assistance when faced with an emergency situation. Phones can be donated by placing the phone, battery, and charger (if available) in the mail to:

Call to Protect

2555 Bishop Circle West
Dexter, MI 48130-1563

In addition, Cellular Fashions in Edison, Cellular Xchange in East Brunswick, Mobile Xchange in New Brunswick, and Rep. Frank Pallone's office in New Brunswick will accept donations at their locations.

For more information and a list of current locations to dropoff wireless phones, visit their Website at www.donateaphone.com.

There is also a new program called Sprint Project Connect, which collects wireless phones to benefit the National Organization on Disability (NOD) and Easter Seals. Phones may be dropped off at participating Sprint stores and Easter Seals locations. For more information visit the NOD's Website, www.nod.org, and click on the Sprint Project Connect icon.

ELECTRONICS RECYCLING PROGRAM

Middlesex is one of the few New Jersey counties operating a permanent drop-off site for broken or outdated consumer electronics items.



It is located at the office of Hesstech, LLC, 45 Executive Avenue, Edison.

- Hours: First Saturday of each month from 9 AM-1 PM and the third Monday of each month from 12 PM-4 PM
- Free to Middlesex County residents (proof of residency will be requested)
- Items Accepted: Computer equipment (including CPUs, monitors, keyboards, scanners, modems, printers and cables), TVs, telephones, irons, fluorescent lamps, and thermostats and thermometers containing mercury

Sponsored by the Middlesex County Board of Chosen Freeholders.

For directions and information: Middlesex County Division of Solid Waste Management, 732-745-4170, or email solidwaste@co.middlesex.nj.us.

HOME GENERATION OF MEDICAL WASTE

Although it is technically "legal" for a home self-care generator of syringes (sharps) to place them in the garbage if properly secured, there is a much safer way to dispose of these items. Many hospitals in and around the County participate in the New Jersey Hospital Association's Safe Syringe program. Hospitals provide sharps containers to the home generator that the generator returns to the hospital when full. Contact the hospitals listed below for further information. Note: Needles should never be put in any type of container and placed out for recycling collection. This is very hazardous to all personnel handling recyclable materials.

St. Peter's University Hospital
New Brunswick
732-745-8600 ext. 8470
Ask for Safe Syringe Program

Princeton Medical Center
Princeton
609-497-4266
Joan Gillard

Rahway Hospital
Rahway
732-499-6056
Janet Tassos

JFK Medical Center
Edison
732-321-7539
Judith Lechek

Somerset Medical Center
Somerville
908-685-2200
Ask for Safe Syringe Program

In addition, Waste Management, a hauling company, has a "Sharps Disposal by Mail" program. Participants are provided with an approved disposal container and mail the full containers for the disposal using the U.S. Postal Service. Interested parties can call Waste Management for details and pricing at 877-WASTE-MD.

Curbside Inc. also has a program for sharps. Call 1-800-449-7587 for details.



HOUSEHOLD BATTERIES COLLECTION PROGRAM

Batteries accepted include all types of alkaline batteries (C, D, AA, 9-volt, etc.); the button cell batteries found in watches, calculators, and other small electronic items; and larger batteries, such as those found in cell phones, laptops, and camcorders.

Household Battery Drop-off Locations: (during regular business hours)

Carteret Health Department, 216 Pershing Avenue

Cranbury Borough Hall, 23A Main Street

Dunellen Public Library, New Market Road

East Brunswick Municipal Building,
1 Jean Walling Civic Center Drive

East Brunswick Public Library, 2 Jean Walling
Civic Center Drive

East Brunswick Public Works Department, 4 Harts Lane

East Brunswick Recycling Center,
357 Dunhams Corner Road

East Brunswick Senior Center, Civic Center Drive

Edison Main Library, Plainfield Avenue

Edison/North Edison Library, Grove Avenue

Helmetta Borough Hall, Main Street

Highland Park Borough Hall, 221 South 5th Street

Highland Park Public Works Department,
444 Valentine Street

Jamesburg Public Library, 229 Gatzmer Avenue

Metuchen Public Library, 480 Middlesex Avenue

Metuchen Senior Center, Center Street

Middlesex Borough Recycling Center,
1200 Mountain Avenue

Middlesex County Administration Building,
75 Bayard Street, New Brunswick

Milltown Borough Hall, 39 Washington Avenue

Milltown Hardware, 66 North Main Street

Milltown Public Library, West Church Street

Milltown Senior Center, Violet Terrace

Monroe Public Library, 4 Municipal Plaza

Monroe Recycling Center, Spotswood-Gravel Hill Road

Monroe Senior Center, Municipal Building,
Perrineville Road

New Brunswick Library, Livingston Avenue

North Brunswick Department of Public Works,
45 Quarry Lane

North Brunswick Municipal Complex,
710 Hermann Road

Old Bridge Public Library,
One Old Bridge Plaza (Route 516)

Perth Amboy Drop-off Center, 599 Fayette Street

Piscataway Public Library, 500 Hoes Lane

Piscataway Public Library, 20 Murray Avenue

Plainsboro Conservation Center, Grovers Mill Road

Sayreville Borough Hall, 167 Main Street

Sayreville Clerk's Office, 167 Main Street

Sayreville Public Library, 1050 Washington Avenue

Sayreville Recycling Center, Bordentown Avenue

Sayreville Senior Center, Main Street

South Amboy Senior Center, 108 South Stevens Avenue

South Brunswick Municipal Complex, Route 522
(Ridge Road) and Kingston Lane

South Plainfield Drop-off Center, Kenneth Avenue

South Plainfield Public Library, 2484 Plainfield Avenue

South River Borough Hall, 48 Washington Street

South River Department of Public Works, 9 Ivan Way

South River Public Library, Appleby Avenue

South River Trygar's Hardware, 44 Ferry Street

Spotswood Public Library, Main Street

Woodbridge Department of Public Works, Smith Street

Woodbridge Public Library, One George Frederick Plaza

For directions and information:

Middlesex County Division of Solid Waste Management,
732-745-4170, or email solidwaste@co.middlesex.nj.us.



HOUSEHOLD HAZARDOUS WASTE (HHW) COLLECTION

Seven household hazardous waste drop-off events will be held this year at various locations. **HHW DROP-OFF IS FREE!**

RULES:

- Middlesex County residents only (proof of County residency will be requested).
- Residential waste only. No waste from commercial or industrial sources.
- No containers larger than five gallons.
- Leave HHW materials in their original containers whenever possible. If materials are not in original containers, label the container to indicate contents.

Items Accepted Include (but are not limited to):

adhesives • aerosol cans • antifreeze • batteries (household or car) • brake fluid • drain cleaner • driveway sealer • fluorescent lightbulbs (no broken bulbs, please) • herbicides • kerosene • lighter fluid • mercury thermometers • motor oil • oil filters • oven cleaner • pesticides • petroleum lubricants • photographic chemicals • pool chemicals • propane tanks • transmission fluid

PROPANE TANK DISPOSAL

Propane tanks without OPD (Overfill Protection Devices) valves are no longer permitted to be refilled in New Jersey. If you are a County resident and have one of these older tanks, you may bring it to any of our Household Hazardous Waste Days. In addition, some municipalities accept them at their drop-off sites and the following companies will also accept these items; however, the companies may charge a fee. Call the company of your choice for more information.

H & H Gas Co.

Windsor
609-448-3232

Middlesex Welding

North Brunswick
732-297-0900

Propane Power Corp.

Newark
973-589-3030

Synergy Gas

South Plainfield
908-755-5100



PAINT RECYCLING DROP-OFF PROGRAM

Our award-winning paint recycling program features nine permanent paint drop-off sites, where paint and paint-related products are collected, recycled, and properly disposed.

The program was created by the MCIA, in cooperation with the County Division of Solid Waste Management, the Solid Waste Advisory Council, and the Board of Chosen Freeholders.

It is open to Middlesex County residents only (proof of County residency will be requested).

Items Accepted:

Latex, water, and oil-based paints • stains • varnishes • lacquers • thinners • paint in aerosol spray cans

Paint Drop-off Sites & Hours:

1st Saturday of the Month

Middlesex Borough Recycling Center: 8 AM-4 PM
1200 Mountain Avenue, Middlesex Borough

East Brunswick Reclamation Center: 8 AM-4 PM
357 Dunhams Corner Road, East Brunswick

2nd Saturday of the Month

Dunellen Public Works: 8 AM-2 PM
235 Hall Street, Dunellen

New Brunswick Public Works: 8 AM-12 PM
400 Jersey Avenue, New Brunswick

Old Bridge Public Works: 8 AM-4 PM
1 Old Bridge Plaza, Municipal Center, Old Bridge

3rd Saturday of the Month

South Plainfield Recycling Center: 8 AM-2 PM
Kenneth Avenue, South Plainfield

Helmetta Borough Hall: 8 AM-12 PM
60 Main Street, Helmetta

4th Saturday of the Month

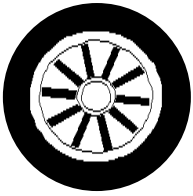
Woodbridge Municipal Services Center: 8 AM-4 PM
225 Smith Street, Keasbey

South Brunswick Recycling Center: 8 AM-4 PM
Kingston Lane, South Brunswick

Note: In months that include five Saturdays, no sites are open on the fifth Saturday.

For directions and information: 1-800-488-MCIA or www.mciauth.com





TIRE RECYCLING PROGRAM

The tire recycling program is operated by the Middlesex County Division of Solid Waste Management.

RULES:

- Middlesex County residents only (proof of residency will be requested).
- Check-in required.
- Maximum number of tires accepted per visit: 8.
- Only automobile and light truck tires are accepted.

NOT Accepted: Oversized tires and tires from businesses or commercial interests

LOCATIONS & HOURS:

Plainsboro Conservation Center

(off Grovers Mill Road)

April 1 - December 15: Monday, 5:30 PM-7:30 PM; Thursday, 5:30 PM-7:30 PM; Saturday, 10 AM-5 PM; December 16 - March 31: Saturday, 10 AM- 2 PM. Closed Sundays and holidays.

Metuchen Recycling Center

(Jersey Avenue)

Monday, Wednesday, and Friday, 8 AM-2 PM; Tuesday and Thursday, 8 AM-6 PM; Saturday, 9 AM-3 PM. Closed Sundays and holidays.

East Brunswick Reclamation Center

(357 Dunhams Corner Road)

Monday - Saturday, 8 AM-4 PM. Closed Sundays and holidays.

Woodbridge Municipal Services Center

(225 Smith Street, Keasbey,
beneath the Parkway and Route 9 bridges)

Monday - Saturday, 8 AM-4 PM. Closed Sundays and holidays.

For directions: Middlesex County Division of Solid Waste Management at 732-745-4170 or email solidwaste@co.middlesex.nj.us.





Middlesex County Food Organization and Outreach Distribution Services (M.C.F.O.O.D.S.)

Countywide Emergency Food Network for Those in Need

The primary goal of M.C.F.O.O.D.S. is to ensure that all Middlesex County residents in need have access to enough nutritionally adequate food and necessities at all times. There are over 60 food pantries and soup kitchens in Middlesex County that have joined the M.C.F.O.O.D.S. partnership to help attain our goal. A directory of Food Pantries, Senior Citizen Nutrition Sites, and Soup Kitchens in Middlesex County is available by calling 732-729-0880.

You can help ensure that all Middlesex County residents have access to nutritionally adequate food at all times by donating canned goods (No Glass, please) and other nonperishable necessities such as canned fruit, stew, meat, tuna fish, peanut butter, jelly, rice, macaroni and cheese, cereal, and personal products and baby items including diapers, wipes, shampoo, soap, deodorant, toothpaste, etc.

You may take your donations to any of the following permanent year-round drop-off sites, which include the Public Libraries in Dunellen, Edison, Milltown, Monroe, North Brunswick, Plainsboro, South Brunswick, Spotswood, and Woodbridge.

For more information please call the coordinator at 732-729-0880.

NEED HELP? INFO LINE of Middlesex County

Info Line is Middlesex County's only computer-based information and referral system. The primary mission of Info Line is to provide personal service to help link people in need with appropriate programs designed to address their particular problems. Info Line provides a single point of access to the many social and human service organizations in the County. Residents and professionals alike can benefit from this service, which is free and always confidential. Info Line's directory services can also be accessed online at www.info-line.org.

Get the Information you need to find the help you need!

- Finding Shelter & Affordable Housing
- Financial Assistance
- Donations & Volunteer Opportunities
- Human & Social Services Information
- Legal Services
- Health & Medical Care
- Mental Health Services
- Emergency Food Needs
- Medical & Prescription Services
- Drug & Alcohol Abuse
- And more . . .

The computer system used by Info Line is equipped with special capabilities to allow for the best match between caller need and community program. Incoming calls in English and Spanish will be handled by the Info Line staff, 24 hours a day, 7 days a week. Access to other languages is available.

ONE CALL DOES IT ALL! Dial 211 or 1-888-908-4636 (INFO)



of Middlesex County



Reuse It, Again! Organization Questionnaire – Side 1



Middlesex County Improvement Authority
101 Interchange Plaza, Cranbury, NJ 08512
Phone: 609-655-5141 Fax: 609-655-4748

To list your organization in our next edition or to make changes to your current listing, please complete both sides of this form fully. Background information on your organization and the charities you assist may be provided by including literature or additional pages.

Name of Organization _____

Address _____

Contact Person _____ Email _____

Telephone _____ Fax _____

Website _____ Business Hours _____

Where do you accept drop-offs (address)? _____

On what days and during what hours? _____

Do you provide pickups? _____

If so, how are they arranged? _____

Are there any fees involved in the drop-off or collection procedure? _____

Are there limits to the quantity of material that can be dropped off? _____

Where do the donated materials go (sold to others, donated, etc.)? _____

Please complete the reverse side of this form for information on specific items.



Reuse It, Again! Organization Questionnaire – Side 2

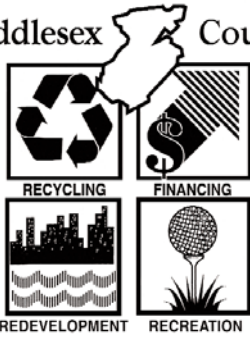
Middlesex County Improvement Authority
101 Interchange Plaza, Cranbury, NJ 08512
Phone: 609-655-5141 Fax: 609-655-4748

Please check any of the following donations that your organization will accept and include any specific items/information in each category.

Item	Specific Information / Preparation Requirements
<input type="checkbox"/> Appliances	_____
<input type="checkbox"/> Arts & crafts materials	_____
<input type="checkbox"/> Automobiles	_____
<input type="checkbox"/> Baby Items	_____
<input type="checkbox"/> Bicycles	_____
<input type="checkbox"/> Books	_____
<input type="checkbox"/> Building materials, tools	_____
<input type="checkbox"/> Clothing - to be recycled	_____
<input type="checkbox"/> Clothing - to be reused	_____
<input type="checkbox"/> Computers	_____
<input type="checkbox"/> Computer supplies	_____
<input type="checkbox"/> Cookware (pots, pans)	_____
<input type="checkbox"/> Diningware (dishes, utensils)	_____
<input type="checkbox"/> Electronics	_____
<input type="checkbox"/> Eyeglasses	_____
<input type="checkbox"/> Furniture, Household	_____
<input type="checkbox"/> Furniture, Office	_____
<input type="checkbox"/> Gardening tools	_____
<input type="checkbox"/> Greeting cards	_____
<input type="checkbox"/> Magazines	_____
<input type="checkbox"/> Media (CDs, DVDs, VHS, etc.) educational	_____
<input type="checkbox"/> Media (CDs, DVDs, VHS, etc.) used	_____
<input type="checkbox"/> Medical equipment	_____
<input type="checkbox"/> Office supplies	_____
<input type="checkbox"/> Pet items	_____
<input type="checkbox"/> Playground equipment	_____
<input type="checkbox"/> Printers, computer	_____
<input type="checkbox"/> Shoes	_____
<input type="checkbox"/> Sporting goods	_____
<input type="checkbox"/> Toys	_____
<input type="checkbox"/> Typewriters	_____
<input type="checkbox"/> Other items (please list):	_____



Middlesex County



Improvement Authority

**MIDDLESEX COUNTY
IMPROVEMENT AUTHORITY**

David B. Crabiel

Freeholder Director
& MCIA Liaison

Leonard J. Roseman, Chairman

Robert Mantz
Raymond J. Geneske
Jacque Eaker
Anthony Raczynski
Richard Pucci, Executive Director

**MIDDLESEX COUNTY
BOARD OF CHOSEN FREEHOLDERS**

David B. Crabiel
Freeholder Director

Stephen J. Dalina
Freeholder Deputy Director

Jane Z. Brady
Camille Fernicola
H. James Polos
John Pulomena
Christopher Rafano

Middlesex County Improvement Authority • 101 Interchange Plaza, Cranbury, NJ 08512

Phone: 609-655-5141 • Fax: 609-655-4748 • Email: mciaadmin@mciauth.com

Website: www.mciauth.com